

For Research Use Only

# SLC31A1 Recombinant antibody, PBS Only (Capture)



Catalog Number: 83844-3-PBS

## Basic Information

Catalog Number: 83844-3-PBS	GenBank Accession Number: BC013611	Purification Method: Protein A purification
Size: 1 mg/ml	GeneID (NCBI): 1317	CloneNo.: 240868C2
Source: Rabbit	UNIPROT ID: O15431	
Isotype: IgG	Full Name: solute carrier family 31 (copper transporters), member 1	
Immunogen Catalog Number: AG26601	Calculated MW: 21 kDa	

## Applications

**Tested Applications:**  
Indirect ELISA, Cytometric bead array

**Species Specificity:**  
human

## Background Information

### Storage

**Storage:**  
Store at -80°C.  
**The product is shipped with ice packs. Upon receipt, store it immediately at -80°C**

**Storage Buffer:**  
PBS Only

For technical support and original validation data for this product please contact:

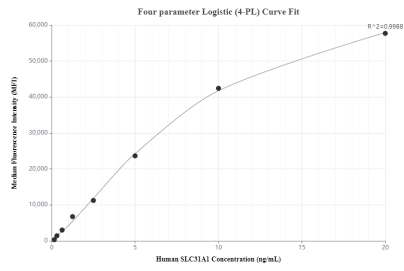
T: 4006900926

E: [Proteintech-CN@ptglab.com](mailto:Proteintech-CN@ptglab.com)

W: [ptgcn.com](http://ptgcn.com)

**This product is exclusively available under Proteintech Group brand and is not available to purchase from any other manufacturer.**

## Selected Validation Data



Cytometric bead array standard curve of MP00817-1, SLC31A1 Recombinant Matched Antibody Pair, PBS Only. Capture antibody: 83844-3-PBS. Detection antibody: 83844-1-PBS. Standard: Ag26601. Range: 0.156-20 ng/mL.