

For Research Use Only

SLC31A1 Recombinant antibody

Catalog Number: 83844-5-RR

Featured Product



Basic Information

Catalog Number:

83844-5-RR

Size:

650 ug/ml

Source:

Rabbit

Isotype:

IgG

Immunogen Catalog Number:

AG26601

GenBank Accession Number:

BC013611

GeneID (NCBI):

1317

UNIPROT ID:

O15431

Full Name:

solute carrier family 31 (copper transporters), member 1

Calculated MW:

21 kDa

Observed MW:

21-23 kDa

Purification Method:

Protein A purification

CloneNo.:

240868D10

Recommended Dilutions:

WB 1:5000-1:50000

Applications

Tested Applications:

WB, ELISA

Species Specificity:

human

Positive Controls:

WB : HeLa cells, HepG2 cells

Background Information

Storage

Storage:

Store at -20°C. Stable for one year after shipment.

Storage Buffer:

PBS with 0.02% sodium azide and 50% glycerol pH 7.3.

Aliquoting is unnecessary for -20°C storage

For technical support and original validation data for this product please contact:

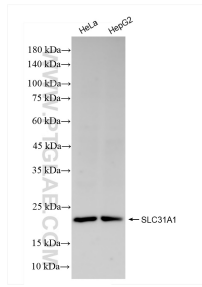
T: 4006900926

E: Proteintech-CN@ptglab.com

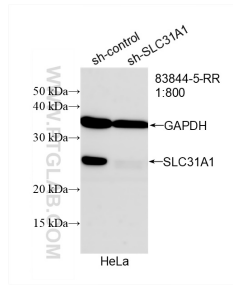
W: ptgcn.com

This product is exclusively available under Proteintech Group brand and is not available to purchase from any other manufacturer.

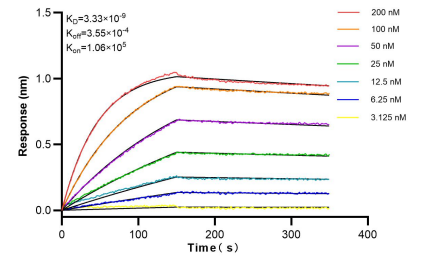
Selected Validation Data



Various lysates were subjected to SDS PAGE followed by western blot with 83844-5-RR (SLC31A1 antibody) at dilution of 1:10000 incubated at room temperature for 1.5 hours.



WB result of SLC31A1 antibody (83844-5-RR; 1:800; incubated at room temperature for 1.5 hours) with sh-Control and sh-SLC31A1 transfected HeLa cells.



Biacore BLI kinetic assays of 83844-5-RR against Human SLC31A1 were performed. The affinity constant is 3.33 nM.