

For Research Use Only

SLC31A1 Recombinant antibody, PBS Only (Capture)

Catalog Number:83844-7-PBS



Basic Information

Catalog Number: 83844-7-PBS	GenBank Accession Number: BC013611	Purification Method: Protein A purification
Size: 1 mg/ml	GeneID (NCBI): 1317	CloneNo.: 240868E3
Source: Rabbit	UNIPROT ID: O15431	
Isotype: IgG	Full Name: solute carrier family 31 (copper transporters), member 1	
Immunogen Catalog Number: AG26601	Calculated MW: 21 kDa	

Applications

Tested Applications:
Sandwich ELISA, Indirect ELISA, Sample test

Species Specificity:
human

Background Information

Storage

Storage:
Store at -80°C.
The product is shipped with ice packs. Upon receipt, store it immediately at -80°C

Storage Buffer:
PBS Only

For technical support and original validation data for this product please contact:

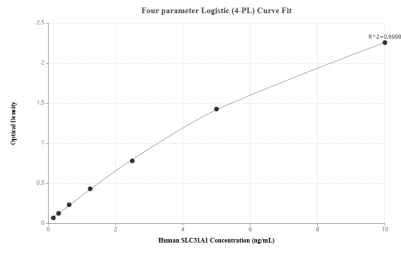
T: 4006900926

E: Proteintech-CN@ptglab.com

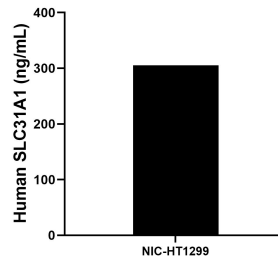
W: ptgcn.com

This product is exclusively available under Proteintech Group brand and is not available to purchase from any other manufacturer.

Selected Validation Data



Sandwich ELISA standard curve of MP00817-4, Human SLC31A1 Recombinant Matched Antibody Pair - PBS only. 83844-7-PBS was coated to a plate as the capture antibody and incubated with serial dilutions of standard Ag26601. 83844-1-PBS was HRP conjugated as the detection antibody. Range: 0.156-10 ng/mL



The mean SLC31A1 concentration was determined to be 305.42 ng/mL in NIC-HT 1299 cell extract based on a 1.5 mg/mL extract load.