

For Research Use Only

vwf Recombinant antibody, PBS Only (Detector)

Catalog Number: 83854-1-PBS



Basic Information

Catalog Number:

83854-1-PBS

Size:

1 mg/ml

Source:

Rabbit

Isotype:

IgG

Immunogen Catalog Number:

AG25578

GenBank Accession Number:

GeneID (NCBI):

7450

UNIPROT ID:

P04275

Full Name:

von Willebrand factor

Purification Method:

Protein A purification

CloneNo.:

240867D7

Applications

Tested Applications:

Cytometric bead array, Sandwich ELISA, Indirect ELISA,
Sample test

Species Specificity:

human

Background Information

Storage

Storage:

Store at -80°C.

The product is shipped with ice packs. Upon receipt, store it immediately at -80°C

Storage Buffer:

PBS Only

For technical support and original validation data for this product please contact:

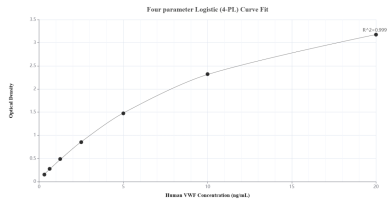
T: 4006900926

E: Proteintech-CN@ptglab.com

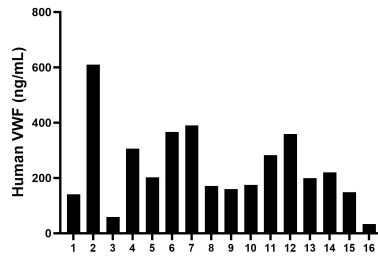
W: ptgcn.com

This product is exclusively available under Proteintech Group brand and is not available to purchase from any other manufacturer.

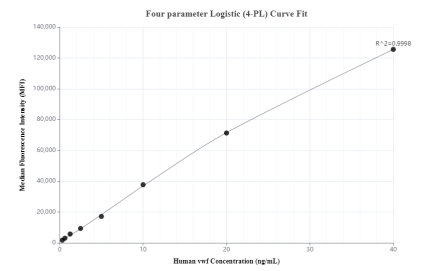
Selected Validation Data



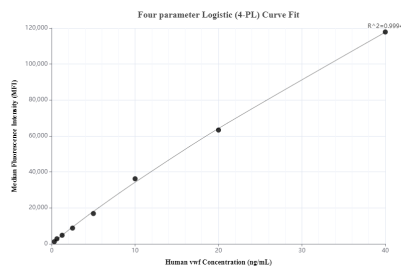
Sandwich ELISA standard curve of MP00810-3, Human VWF Recombinant Matched Antibody Pair-PBS only. 83854-4-PBS was coated to a plate as the capture antibody and incubated with serial dilutions of standard Ag25578. 83854-1-PBS was HRP conjugated as the detection antibody. Range: 0.313-20 ng/mL.



Serum of sixteen individual healthy human donors was measured. The VWF concentration of detected samples was determined to be 239.02 ng/mL with a range of 33.91-609.64 ng/mL.



Cytometric bead array standard curve of MP00810-1, VWF Recombinant Matched Antibody Pair, PBS Only. Capture antibody: 83854-3-PBS. Detection antibody: 83854-1-PBS. Standard: Ag25578. Range: 0.313-40 ng/mL.



Cytometric bead array standard curve of MP00810-2, VWF Recombinant Matched Antibody Pair, PBS Only. Capture antibody: 83854-2-PBS. Detection antibody: 83854-1-PBS. Standard: Ag25578. Range: 0.313-40 ng/mL.