

For Research Use Only

# BCHE Recombinant antibody, PBS Only (Detector)



Catalog Number: 83855-1-PBS

## Basic Information

Catalog Number: 83855-1-PBS	GenBank Accession Number: BC008396	Purification Method: Protein A purification
Size: 1 mg/ml	GeneID (NCBI): 590	CloneNo.: 240863E4
Source: Rabbit	UNIPROT ID: P06276	
Isotype: IgG	Full Name: butyrylcholinesterase	
Immunogen Catalog Number: AG20888	Calculated MW: 602 aa, 68 kDa	

## Applications

**Tested Applications:**  
Cytometric bead array, Indirect ELISA

**Species Specificity:**  
human

## Background Information

### Storage

**Storage:**  
Store at -80°C.  
**The product is shipped with ice packs. Upon receipt, store it immediately at -80°C**

**Storage Buffer:**  
PBS Only

For technical support and original validation data for this product please contact:

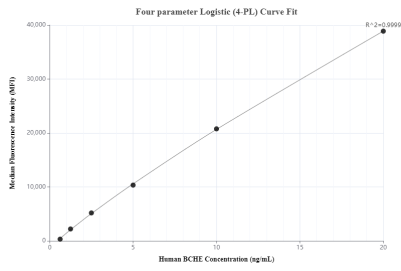
T: 4006900926

E: [Proteintech-CN@ptglab.com](mailto:Proteintech-CN@ptglab.com)

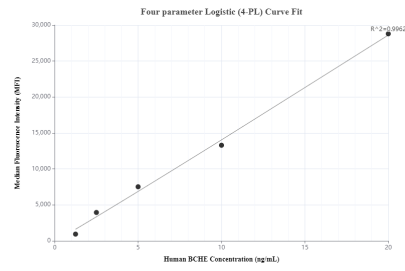
W: [ptgcn.com](http://ptgcn.com)

**This product is exclusively available under Proteintech Group brand and is not available to purchase from any other manufacturer.**

## Selected Validation Data



Cytometric bead array standard curve of MP00804-1, BCHE Recombinant Matched Antibody Pair, PBS Only. Capture antibody: 83855-2-PBS. Detection antibody: 83855-1-PBS. Standard: Ag20888. Range: 0.625-20 ng/mL



Cytometric bead array standard curve of MP00804-2, BCHE Recombinant Matched Antibody Pair, PBS Only. Capture antibody: 83855-3-PBS. Detection antibody: 83855-1-PBS. Standard: Ag20888. Range: 1.25-20 ng/mL