

For Research Use Only

# SOD1 Recombinant antibody, PBS Only (Capture)



Catalog Number:83857-3-PBS

## Basic Information

<b>Catalog Number:</b> 83857-3-PBS	<b>GenBank Accession Number:</b> NM_000454.5	<b>Purification Method:</b> Protein A purification
<b>Size:</b> 1 mg/ml	<b>GeneID (NCBI):</b> 6647	<b>CloneNo.:</b> 240888F11
<b>Source:</b> Rabbit	<b>UNIPROT ID:</b> P00441	
<b>Isotype:</b> IgG	<b>Full Name:</b> superoxide dismutase 1, soluble	
	<b>Calculated MW:</b> 16kDa	

## Applications

**Tested Applications:**  
Cytometric bead array, Sandwich ELISA, Indirect ELISA,  
Sample test

**Species Specificity:**  
human

## Background Information

### Storage

**Storage:**  
Store at -80°C.  
**The product is shipped with ice packs. Upon receipt, store it immediately at -80°C**

**Storage Buffer:**  
PBS Only

For technical support and original validation data for this product please contact:

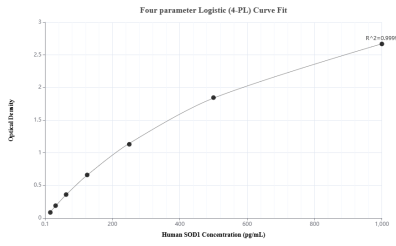
T: 4006900926

E: [Proteintech-CN@ptglab.com](mailto:Proteintech-CN@ptglab.com)

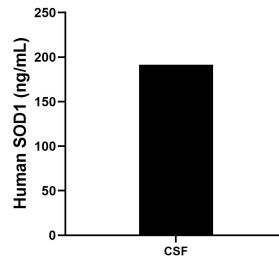
W: [ptgcn.com](http://ptgcn.com)

**This product is exclusively available under Proteintech Group brand and is not available to purchase from any other manufacturer.**

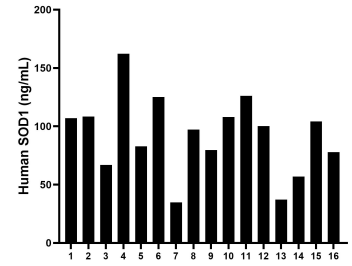
## Selected Validation Data



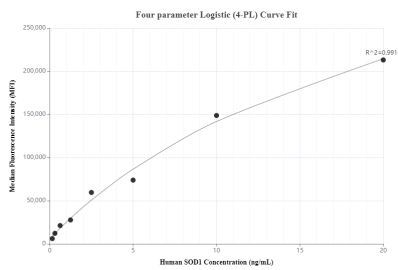
Sandwich ELISA standard curve of MP00799-1, Human SOD1 Recombinant Matched Antibody Pair - PBS only. 83857-3-PBS was coated to a plate as the capture antibody and incubated with serial dilutions of standard Eg1043. 83857-2-PBS was HRP conjugated as the detection antibody. Range: 15.6-1000 pg/mL



The human SOD1 concentration in human cerebrospinal fluid was determined to be 191.6 ng/mL.



Serum of sixteen humans was measured. The human SOD1 concentration of detected samples was determined to be 92.2 ng/mL with a range of 34.8 - 162.3 ng/mL.



Cytometric bead array standard curve of MP00799-1, SOD1 Recombinant Matched Antibody Pair, PBS Only. Capture antibody: 83857-3-PBS. Detection antibody: 83857-2-PBS. Standard: Eg1043. Range: 0.156-20 ng/mL