

For Research Use Only

# HEC1/HEC Recombinant antibody, PBS Only



Catalog Number:83859-1-PBS

## Basic Information

Catalog Number:

83859-1-PBS

Size:

1 mg/ml

Source:

Rabbit

Isotype:

IgG

GenBank Accession Number:

/

GeneID (NCBI):

10403

Full Name:

NDC80 homolog, kinetochore  
complex component (*S. cerevisiae*)

Purification Method:

Protein A purification

CloneNo.:

5A2

## Applications

Tested Applications:

ELISA, IF/ICC, WB

Species Specificity:

human

## Background Information

### Storage

Storage:

Store at -80°C.

**The product is shipped with ice packs. Upon receipt, store it immediately at -80°C**

Storage Buffer:

PBS Only

For technical support and original validation data for this product please contact:

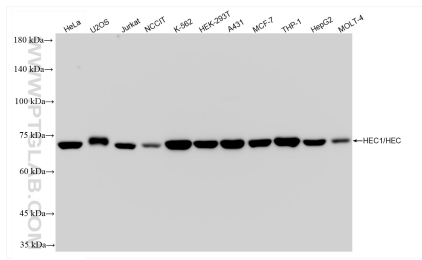
T: 4006900926

E: [Proteintech-CN@ptglab.com](mailto:Proteintech-CN@ptglab.com)

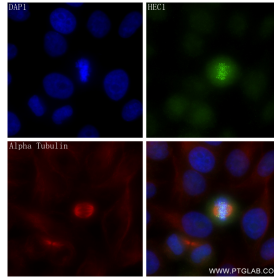
W: [ptgcn.com](http://ptgcn.com)

**This product is exclusively available under Proteintech Group brand and is not available to purchase from any other manufacturer.**

## Selected Validation Data



Various lysates were subjected to SDS PAGE followed by western blot with 83859-1-RR (HEC1/HEC/NDC80 antibody) at dilution of 1:5000 incubated at room temperature for 1.5 hours. This data was developed using the same antibody clone with 83859-1-PBS in a different storage buffer formulation.



Immunofluorescent analysis of (4% PFA) fixed HepG2 cells using HEC1/HEC/NDC80 antibody (83859-1-RR, Clone: 5A2 ) at dilution of 1:250 and CoraLite®488-Conjugated AffiniPure Goat Anti-Rabbit IgG(H+L) (SA00013-2), Alpha Tubulin antibody (66031-1-Ig, Clone: 1E4C11, red). This data was developed using the same antibody clone with 83859-1-PBS in a different storage buffer formulation.