

For Research Use Only

# HEC1/HEC/NDC80 Recombinant antibody

Catalog Number: 83859-1-RR



## Basic Information

<b>Catalog Number:</b> 83859-1-RR	<b>GenBank Accession Number:</b> /	<b>Purification Method:</b> Protein A purification
<b>Size:</b> 1000 ug/ml	<b>GeneID (NCBI):</b> 10403	<b>CloneNo.:</b> 5A2
<b>Source:</b> Rabbit	<b>Full Name:</b> NDC80 homolog, kinetochore complex component (S. cerevisiae)	<b>Recommended Dilutions:</b> WB 1:2000-1:10000 IF/ICC 1:125-1:500
<b>Isotype:</b> IgG	<b>Observed MW:</b> 74 kDa	

## Applications

**Tested Applications:**  
WB, IF/ICC, ELISA

**Species Specificity:**  
human

### Positive Controls:

**WB :** HeLa cells, U2OS cells, Jurkat cells, NCCIT cells, K-562 cells, HEK-293T cells, A431 cells, MCF-7 cells, HepG2 cells, MOLT-4 cells

**IF/ICC :** HepG2 cells, HeLa cells

## Background Information

NDC80 complex is a heterotetrameric protein complex comprised of Hec1 (also called Ndc80), Nuf2, Spc24, and Spc25. Mis12 complex (bound to CENP-C or CENP-T) or CDK1-phosphorylated CENP-T to anchor the NDC80 complex to the kinetochore. HEC is one of several proteins involved in spindle checkpoint signaling. This surveillance mechanism assures correct segregation of chromosomes during cell division by detecting unaligned chromosomes and causing prometaphase arrest until the proper bipolar attachment of chromosomes is achieved.

## Storage

**Storage:**  
Store at -20°C. Stable for one year after shipment.

**Storage Buffer:**  
PBS with 0.02% sodium azide and 50% glycerol pH 7.3.

**Aliquoting is unnecessary for -20°C storage**

For technical support and original validation data for this product please contact:

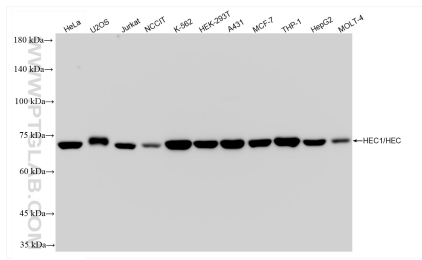
T: 4006900926

E: [Proteintech-CN@ptglab.com](mailto:Proteintech-CN@ptglab.com)

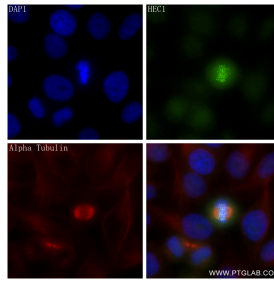
W: [ptgcn.com](http://ptgcn.com)

**This product is exclusively available under Proteintech Group brand and is not available to purchase from any other manufacturer.**

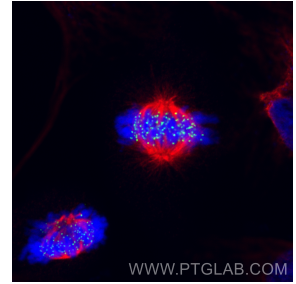
## Selected Validation Data



Various lysates were subjected to SDS PAGE followed by western blot with 83859-1-RR (HEC1/HEC/NDC80 antibody) at dilution of 1:5000 incubated at room temperature for 1.5 hours.



Immunofluorescent analysis of (4% PFA) fixed HepG2 cells using HEC1/HEC/NDC80 antibody (83859-1-RR, Clone: 5A2 ) at dilution of 1:250 and CoraLite®488-Conjugated AffiniPure Goat Anti-Rabbit IgG(H+L) (SA00013-2), Alpha Tubulin antibody (66031-1-Ig, Clone: 1E4C11, red).



Immunofluorescent analysis of (4% PFA) fixed HeLa cells using HEC1/HEC/NDC80 antibody (83859-1-RR, Clone: 5A2 ) at dilution of 1:500 and Multi-rAb CoraLite® Plus 488-Goat Anti-Rabbit Recombinant Secondary Antibody (H+L) (RGAR002), Alpha Tubulin antibody (66031-1-Ig, Clone: 1E4C11, red).