

For Research Use Only

# FIP1L1 Recombinant antibody, PBS Only



Catalog Number: 83863-2-PBS

## Basic Information

Catalog Number: 83863-2-PBS	GenBank Accession Number: BC017724	Purification Method: Protein A purification
Size: 1 mg/ml	GeneID (NCBI): 81608	CloneNo.: 240658C4
Source: Rabbit	UNIPROT ID: Q6UN15	
Isotype: IgG	Full Name: FIP1 like 1 (S. cerevisiae)	
Immunogen Catalog Number: AG2921	Calculated MW: 594 aa, 66 kDa	

## Applications

Tested Applications:  
WB, ELISA

Species Specificity:  
human, mouse

## Background Information

### Storage

Storage:  
Store at -80°C.  
The product is shipped with ice packs. Upon receipt, store it immediately at -80°C

Storage Buffer:  
PBS Only

For technical support and original validation data for this product please contact:

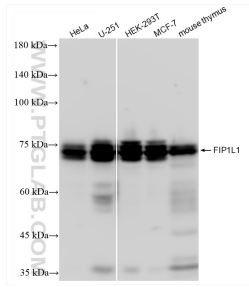
T: 4006900926

E: [Proteintech-CN@ptglab.com](mailto:Proteintech-CN@ptglab.com)

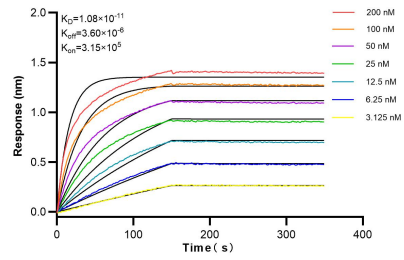
W: [ptgcn.com](http://ptgcn.com)

This product is exclusively available under Proteintech Group brand and is not available to purchase from any other manufacturer.

## Selected Validation Data



Various lysates were subjected to SDS PAGE followed by western blot with 83863-2-RR (FIP1L1 antibody) at dilution of 1:7500 incubated at room temperature for 1.5 hours. This data was developed using the same antibody clone with 83863-2-PBS in a different storage buffer formulation.



Biolayer interferometry (BLI) kinetic assays of 83863-2-RR against Human FIP1L1 were performed. The affinity constant is 10.8 pM.