

For Research Use Only

FIP1L1 Recombinant antibody

Catalog Number: 83863-2-RR



Basic Information

Catalog Number: 83863-2-RR	GenBank Accession Number: BC017724	Purification Method: Protein A purification
Size: 750 ug/ml	GeneID (NCBI): 81608	CloneNo.: 240658C4
Source: Rabbit	UNIPROT ID: Q6UN15	Recommended Dilutions: WB 1:2000-1:15000
Isotype: IgG	Full Name: FIP1 like 1 (S. cerevisiae)	
Immunogen Catalog Number: AG2921	Calculated MW: 594 aa, 66 kDa	
	Observed MW: 67-80 kDa	

Applications

Tested Applications:
WB, FC (Intra), ELISA

Species Specificity:
human, mouse

Positive Controls:
WB : HeLa cells, U-251 cells, HEK-293T cells, MCF-7 cells, mouse thymus tissue

Background Information

FIP1L1, also known as FIP1, encodes a subunit of the CPSF (cleavage and polyadenylation specificity factor) complex that polyadenylates the 3' end of mRNA precursors. The FIP1L1-PDGFR fusion gene encodes a constitutively activated tyrosine kinase that links the first 233 amino acids of FIP1L1 to the last 523 amino acids of PDGFRA. This gene fusion and chromosomal deletion causes some forms of idiopathic hypereosinophilic syndrome (HES) (PMID: 12660384).

Storage

Storage:
Store at -20°C. Stable for one year after shipment.

Storage Buffer:
PBS with 0.02% sodium azide and 50% glycerol pH 7.3.

Aliquoting is unnecessary for -20°C storage

For technical support and original validation data for this product please contact:

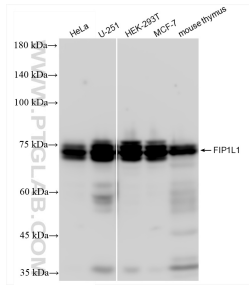
T: 4006900926

E: Proteintech-CN@ptglab.com

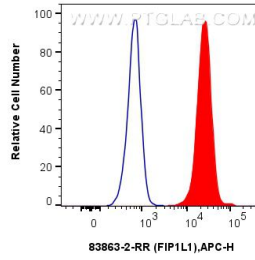
W: ptgcn.com

This product is exclusively available under Proteintech Group brand and is not available to purchase from any other manufacturer.

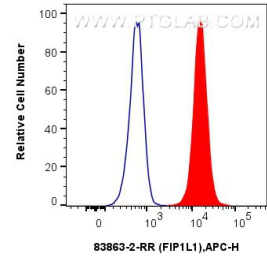
Selected Validation Data



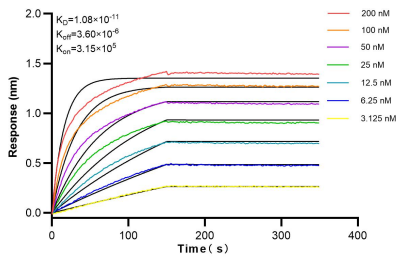
Various lysates were subjected to SDS PAGE followed by western blot with 83863-2-RR (FIP1L1 antibody) at dilution of 1:7500 incubated at room temperature for 1.5 hours.



1×10^6 A549 cells were intracellularly stained with 0.25 μ g FIP1L1 Recombinant antibody (83863-2-RR, Clone:240658C4) and APC-Conjugated AffiniPure Goat Anti-Rabbit IgG(H+L)(red), or 0.25 μ g Isotype Control (blue). Cells were fixed and permeabilized with True-Nuclear Transcription Factor Buffer Set.



1×10^6 U-2 OS were intracellularly stained with 0.25 μ g FIP1L1 Recombinant antibody (83863-2-RR, Clone:240658C4) and APC-Conjugated AffiniPure Goat Anti-Rabbit IgG(H+L)(red), or 0.25 μ g Isotype Control (blue). Cells were fixed and permeabilized with True-Nuclear Transcription Factor Buffer Set.



Bi-layer interferometry (BLI) kinetic assays of 83863-2-RR against Human FIP1L1 were performed. The affinity constant is 10.8 pM.