

For Research Use Only

# FIP1L1 Recombinant antibody, PBS Only



Catalog Number: 83863-3-PBS

## Basic Information

Catalog Number: 83863-3-PBS	GenBank Accession Number: BC017724	Purification Method: Protein A purification
Size: 1 mg/ml	GeneID (NCBI): 81608	CloneNo.: 240658A8
Source: Rabbit	UNIPROT ID: Q6UN15	
Isotype: IgG	Full Name: FIP1 like 1 (S. cerevisiae)	
Immunogen Catalog Number: AG2921	Calculated MW: 594 aa, 66 kDa	

## Applications

Tested Applications:  
IF/ICC, ELISA  
Species Specificity:  
human

## Background Information

### Storage

Storage:  
Store at -80°C.  
The product is shipped with ice packs. Upon receipt, store it immediately at -80°C  
Storage Buffer:  
PBS Only

For technical support and original validation data for this product please contact:

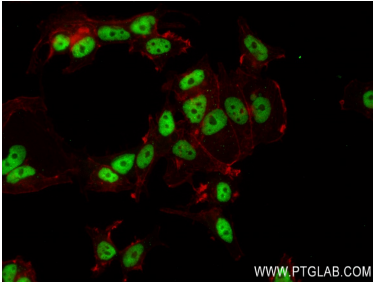
T: 4006900926

E: [Proteintech-CN@ptglab.com](mailto:Proteintech-CN@ptglab.com)

W: [ptgcn.com](http://ptgcn.com)

This product is exclusively available under Proteintech Group brand and is not available to purchase from any other manufacturer.

## Selected Validation Data



Immunofluorescent analysis of (4% PFA) fixed MCF-7 cells using FIP1L1 antibody (83863-3-RR, Clone: 240658A8 ) at dilution of 1:250 and CoraLite®488-Conjugated AffiniPure Goat Anti-Rabbit IgG(H+L) (SA00013-2), CL594-Phalloidin (red). This data was developed using the same antibody clone with 83863-3-PBS in a different storage buffer formulation.