

For Research Use Only

NCR3/NKp30 Recombinant antibody, PBS Only (Capture)

Catalog Number:83882-4-PBS



Basic Information

Catalog Number:

83882-4-PBS

Size:

1 mg/ml

Source:

Rabbit

Isotype:

IgG

GenBank Accession Number:

BC052582

GeneID (NCBI):

259197

UNIPROT ID:

O14931

Full Name:

natural cytotoxicity triggering
receptor 3

Calculated MW:

201 aa, 22 kDa

Purification Method:

Protein A purification

CloneNo.:

240809G11

Applications

Tested Applications:

Cytometric bead array, Sandwich ELISA, Indirect ELISA,
Sample test

Species Specificity:

human

Background Information

Storage

Storage:

Store at -80°C.

The product is shipped with ice packs. Upon receipt, store it immediately at -80°C

Storage Buffer:

PBS Only

For technical support and original validation data for this product please contact:

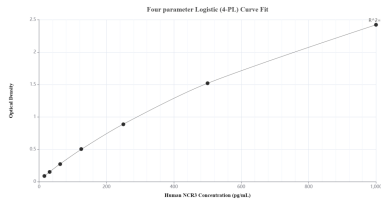
T: 4006900926

E: Proteintech-CN@ptglab.com

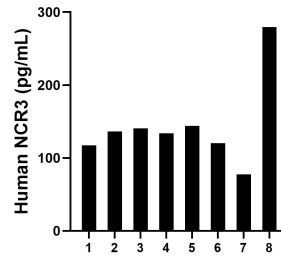
W: ptgcn.com

This product is exclusively available under Proteintech Group brand and is not available to purchase from any other manufacturer.

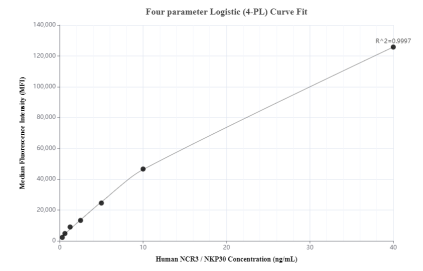
Selected Validation Data



Sandwich ELISA standard curve of MP00833-4, Human NCR3/NKp30 Recombinant Matched Antibody Pair - PBS only. 83882-4-PBS was coated to a plate as the capture antibody and incubated with serial dilutions of standard Eg31663. 83882-5-PBS was HRP conjugated as the detection antibody. Range: 15.6-1000 pg/mL



Serum of eight individual healthy human donors was measured. The NCR3 concentration of detected samples was determined to be 143.6 pg/mL with a range of 77.4 - 279.5 pg/mL.



Cytometric bead array standard curve of MP00833-1, NCR3/NKp30 Recombinant Matched Antibody Pair, PBS Only. Capture antibody: 83882-4-PBS. Detection antibody: 83882-2-PBS. Standard: Eg31663. Range: 0.313-40 ng/mL