

For Research Use Only

Ncam1 Recombinant antibody

Catalog Number: 83883-5-RR



Basic Information

Catalog Number:

83883-5-RR

Size:

1000 ug/ml

Source:

Rabbit

Isotype:

IgG

GenBank Accession Number:

GeneID (NCBI):

17967

UNIPROT ID:

P13595-1

Full Name:

neural cell adhesion molecule 1

Calculated MW:

119 kDa

Observed MW:

120 kDa, 140 kDa, 180 kDa

Purification Method:

Protein A purification

CloneNo.:

240936B10

Recommended Dilutions:

IF/ICC 1:125-1:500

Applications

Tested Applications:

IF/ICC, ELISA

Species Specificity:

mouse

Positive Controls:

IF/ICC : Neuro-2a cells,

Background Information

Neural cell adhesion molecule 1 (NCAM1, also known as CD56) is a cell adhesion glycoprotein of the immunoglobulin (Ig) superfamily. It is a multifunction protein involved in synaptic plasticity, neurodevelopment, and neurogenesis. NCAM1 is expressed on human neurons, glial cells, skeletal muscle cells, NK cells, and a subset of T cells, and the expression is observed in a wide variety of human tumors, including myeloma, myeloid leukemia, neuroendocrine tumors, Wilms' tumor, neuroblastoma, and NK/T cell lymphomas. Three major isoforms of NCAM1, with molecular masses of 120, 140, and 180 kDa, are generated by alternative splicing of mRNA (PMID: 9696812). The glycosylphosphatidylinositol (GPI)-anchored NCAM120 and the transmembrane NCAM140 and NCAM180 consist of five Ig-like domains and two fibronectin-type III repeats (FNIII). All three forms can be posttranslationally modified by the addition of polysialic acid (PSA) (PMID: 14976519). Several other isoforms have also been described (PMID: 1856291).

Storage

Storage:

Store at -20°C. Stable for one year after shipment.

Storage Buffer:

PBS with 0.02% sodium azide and 50% glycerol pH 7.3.

Aliquoting is unnecessary for -20°C storage

For technical support and original validation data for this product please contact:

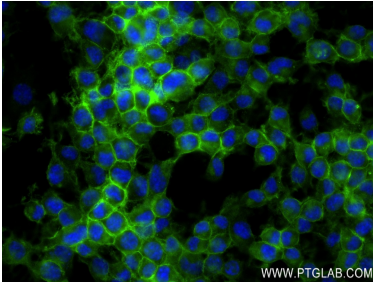
T: 4006900926

E: Proteintech-CN@ptglab.com

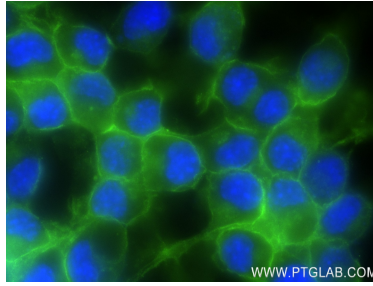
W: ptgcn.com

This product is exclusively available under Proteintech Group brand and is not available to purchase from any other manufacturer.

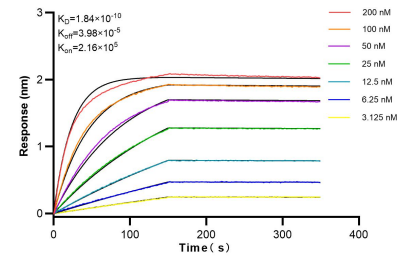
Selected Validation Data



Immunofluorescent analysis of (4% PFA) fixed Neuro-2a cells using Ncam1 antibody (83883-5-RR, Clone: 240936B10) at dilution of 1:250 and CoraLite@488-Conjugated AffiniPure Goat Anti-Rabbit IgG(H+L) (SA00013-2).



Immunofluorescent analysis of (4% PFA) fixed Neuro-2a cells using Ncam1 antibody (83883-5-RR, Clone: 240936B10) at dilution of 1:250 and CoraLite@488-Conjugated AffiniPure Goat Anti-Rabbit IgG(H+L) (SA00013-2).



Bi-layer interferometry (BLI) kinetic assays of 83883-5-RR against Mouse Ncam1 were performed. The affinity constant is 0.184 nM.