

For Research Use Only

CSDC2 Recombinant antibody

Catalog Number:83886-5-RR



Basic Information

Catalog Number: 83886-5-RR	GenBank Accession Number: BC067113	Purification Method: Protein A purification
Size: 1000 ug/ml	GeneID (NCBI): 27254	CloneNo.: 241031C8
Source: Rabbit	UNIPROT ID: Q9Y534	Recommended Dilutions: WB 1:2000-1:10000
Isotype: IgG	Full Name: cold shock domain containing C2, RNA binding	
Immunogen Catalog Number: AG16216	Calculated MW: 153 aa, 17 kDa	
	Observed MW: 20 kDa, 30 kDa	

Applications

Tested Applications: WB, ELISA	Positive Controls: WB : HeLa cells, U2OS cells, U-251 cells
Species Specificity: human	

Background Information

PIPPIN, also known as CSDC2 (Cold shock domain-containing protein C2) is an RNA - binding protein (RBP), highly enriched in the rat brain, specifically enriched in some pyramidal neurons of the cerebral cortex and in the Purkinje cells of the cerebellum (PMID: 10446180). PIPPIN has the potential to undergo different posttranslational modifications and might be a good candidate to regulate the synthesis of specific proteins in response to extracellular stimuli. Nuclear CSDC2 is connected to proliferation and cytoplasmic CSDC2 to terminal differentiation in the decidua and that CSDC2 could regulate differentiation during decidua development (PMID: 30078185, PMID: 17053029).

Storage

Storage:
Store at -20°C. Stable for one year after shipment.
Storage Buffer:
PBS with 0.02% sodium azide and 50% glycerol pH 7.3.
Aliquoting is unnecessary for -20°C storage

For technical support and original validation data for this product please contact:

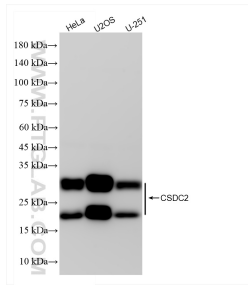
T: 4006900926

E: Proteintech-CN@ptglab.com

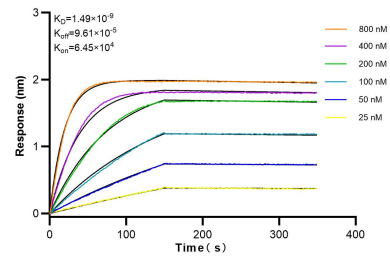
W: ptgcn.com

This product is exclusively available under Proteintech Group brand and is not available to purchase from any other manufacturer.

Selected Validation Data



Various lysates were subjected to SDS PAGE followed by western blot with 83886-5-RR (CSDC2 antibody) at dilution of 1:5000 incubated at room temperature for 1.5 hours.



Biolayer interferometry (BLI) kinetic assays of 83886-5-RR against Human CSDC2 were performed. The affinity constant is 1.49 nM.