

For Research Use Only

# CSDC2 Recombinant antibody

Catalog Number:83886-6-RR



## Basic Information

<b>Catalog Number:</b> 83886-6-RR	<b>GenBank Accession Number:</b> BC067113	<b>Purification Method:</b> Protein A purification
<b>Size:</b> 1000 ug/ml	<b>GeneID (NCBI):</b> 27254	<b>CloneNo.:</b> 241031A11
<b>Source:</b> Rabbit	<b>UNIPROT ID:</b> Q9Y534	<b>Recommended Dilutions:</b> IF/ICC 1:125-1:500
<b>Isotype:</b> IgG	<b>Full Name:</b> cold shock domain containing C2, RNA binding	
<b>Immunogen Catalog Number:</b> AG16216	<b>Calculated MW:</b> 153 aa, 17 kDa	

## Applications

<b>Tested Applications:</b> IF/ICC, FC (Intra), ELISA	<b>Positive Controls:</b> IF/ICC : HeLa cells,
<b>Species Specificity:</b> human	

## Background Information

PIPPIN, also known as CSDC2 (Cold shock domain-containing protein C2) is an RNA - binding protein (RBP), highly enriched in the rat brain, specifically enriched in some pyramidal neurons of the cerebral cortex and in the Purkinje cells of the cerebellum (PMID: 10446180). PIPPIN has the potential to undergo different posttranslational modifications and might be a good candidate to regulate the synthesis of specific proteins in response to extracellular stimuli. Nuclear CSDC2 is connected to proliferation and cytoplasmic CSDC2 to terminal differentiation in the decidua and that CSDC2 could regulate differentiation during decidua development (PMID: 30078185, PMID: 17053029).

## Storage

**Storage:**  
Store at -20°C. Stable for one year after shipment.  
**Storage Buffer:**  
PBS with 0.02% sodium azide and 50% glycerol pH 7.3.  
Aliquoting is unnecessary for -20°C storage

For technical support and original validation data for this product please contact:

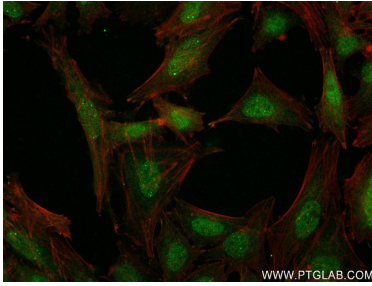
T: 4006900926

E: Proteintech-CN@ptglab.com

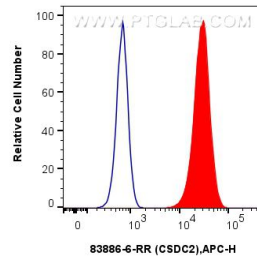
W: ptgcn.com

**This product is exclusively available under Proteintech Group brand and is not available to purchase from any other manufacturer.**

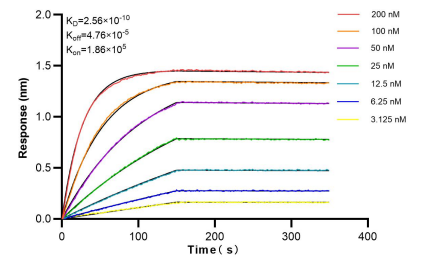
## Selected Validation Data



Immunofluorescent analysis of (4% PFA) fixed HeLa cells using CSDC2 antibody (83886-6-RR, Clone: 241031A11 ) at dilution of 1:250 and CoraLite®488-Conjugated AffiniPure Goat Anti-Rabbit IgG(H+L) (SA00013-2), CL594-Phalloidin (red).



1x10<sup>6</sup> U-2 OS were intracellularly stained with 0.25 ug CSDC2 Recombinant antibody (83886-6-RR, Clone:241031A11) and APC-Conjugated AffiniPure Goat Anti-Rabbit IgG(H+L)(red), or 0.25 ug Isotype Control (blue). Cells were fixed and permeabilized with True-Nuclear Transcription Factor Buffer Set.



Biolayer interferometry (BLI) kinetic assays of 83886-6-RR against Human CSDC2 were performed. The affinity constant is 0.256 nM.