

For Research Use Only

ETV4 Recombinant antibody, PBS Only (Capture)

Catalog Number: 83891-1-PBS



Basic Information

Catalog Number: 83891-1-PBS	GenBank Accession Number: BC007242	Purification Method: Protein A purification
Size: 1 mg/ml	GeneID (NCBI): 2118	CloneNo.: 241042A5
Source: Rabbit	UNIPROT ID: P43268	
Isotype: IgG	Full Name: ets variant 4	
Immunogen Catalog Number: AG0984	Calculated MW: 54 kDa	

Applications

Tested Applications:
Cytometric bead array, Sandwich ELISA, Indirect ELISA,
Sample test

Species Specificity:
human

Background Information

Storage

Storage:
Store at -80°C.
The product is shipped with ice packs. Upon receipt, store it immediately at -80°C
Storage Buffer:
PBS Only

For technical support and original validation data for this product please contact:

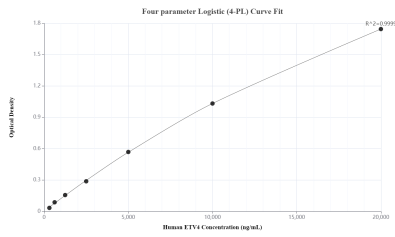
T: 4006900926

E: Proteintech-CN@ptglab.com

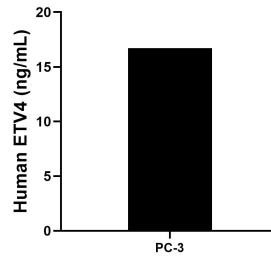
W: ptgcn.com

This product is exclusively available under Proteintech Group brand and is not available to purchase from any other manufacturer.

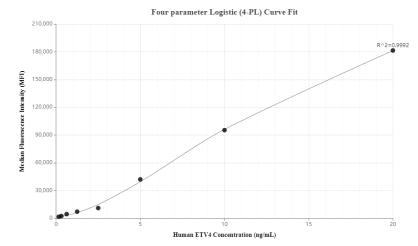
Selected Validation Data



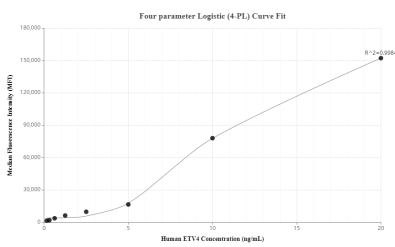
Sandwich ELISA standard curve of MP00867-2, Human ETV4 Recombinant Matched Antibody Pair - PBS only. 83891-1-PBS was coated to a plate as the capture antibody and incubated with serial dilutions of standard Ag0984. 83891-4-PBS was HRP conjugated as the detection antibody. Range: 0.313-20 ng/mL.



The mean ETV4 concentration was determined to be 16.70 ng/mL in PC-3 cell extract based on a 1.20 mg/mL extract load.



Cytometric bead array standard curve of MP00867-1, ETV4 Recombinant Matched Antibody Pair, PBS Only. Capture antibody: 83891-1-PBS. Detection antibody: 83891-5-PBS. Standard: Ag0984. Range: 0.156-20 ng/mL.



Cytometric bead array standard curve of MP00867-2, ETV4 Recombinant Matched Antibody Pair, PBS Only. Capture antibody: 83891-1-PBS. Detection antibody: 83891-4-PBS. Standard: Ag0984. Range: 0.156-20 ng/mL.