

For Research Use Only

PLEC Recombinant antibody, PBS Only (Capture)

Catalog Number:83898-4-PBS



Basic Information

Catalog Number: 83898-4-PBS	GenBank Accession Number: NM_201380	Purification Method: Protein A purification
Size: 1 mg/ml	GeneID (NCBI): 5339	CloneNo.: 240891E5
Source: Rabbit	UNIPROT ID: Q15149	
Isotype: IgG	Full Name: plectin 1, intermediate filament binding protein 500kDa	
Immunogen Catalog Number: AG29418	Calculated MW: 532 kDa	

Applications

Tested Applications:
Sandwich ELISA, Indirect ELISA, Sample test

Species Specificity:
human

Background Information

Storage

Storage:
Store at -80°C.
The product is shipped with ice packs. Upon receipt, store it immediately at -80°C

Storage Buffer:
PBS Only

For technical support and original validation data for this product please contact:

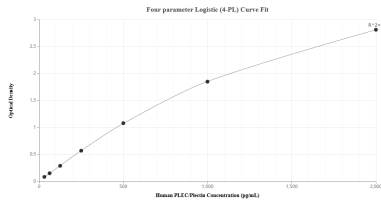
T: 4006900926

E: Proteintech-CN@ptglab.com

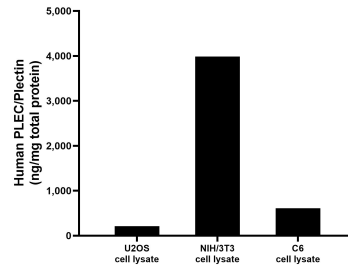
W: ptgcn.com

This product is exclusively available under Proteintech Group brand and is not available to purchase from any other manufacturer.

Selected Validation Data



Sandwich ELISA standard curve of MP00839-4, Human PLEC/Plectin Recombinant Matched Antibody Pair - PBS only. 83898-4-PBS was coated to a plate as the capture antibody and incubated with serial dilutions of standard Ag29418. 83898-1-PBS was HRP conjugated as the detection antibody. Range: 31.25-2000 pg/mL



U2OS cell lysate, NIH/3T3 cell lysate and C6 cell lysate were measured. The human PLEC/Plectin concentration was determined to be 212.14 ng/mg total protein in U2OS cell lysate, 3,895.97 ng/mg total protein in NIH/3T3 cell lysate and 609.19 ng/mg total protein in C6 cell lysate.