

For Research Use Only

# CXCL8,IL8 Recombinant antibody, PBS Only (Capture)

Catalog Number:83903-5-PBS



## Basic Information

<b>Catalog Number:</b> 83903-5-PBS	<b>GenBank Accession Number:</b> BC013615	<b>Purification Method:</b> Protein A purification
<b>Size:</b> 1 mg/ml	<b>GeneID (NCBI):</b> 3576	<b>CloneNo.:</b> 240889B4
<b>Source:</b> Rabbit	<b>ENSEMBL Gene ID:</b> ENSG00000169429	
<b>Isotype:</b> IgG	<b>UNIPROT ID:</b> P10145	
	<b>Full Name:</b> interleukin 8	
	<b>Calculated MW:</b> 99 aa, 11 kDa	

## Applications

**Tested Applications:**  
Sandwich ELISA, Indirect ELISA, Sample test

**Species Specificity:**  
human

## Background Information

### Storage

**Storage:**  
Store at -80°C.  
**The product is shipped with ice packs. Upon receipt, store it immediately at -80°C**

**Storage Buffer:**  
PBS Only

For technical support and original validation data for this product please contact:

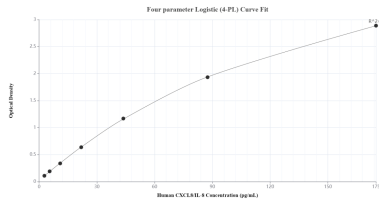
T: 4006900926

E: [Proteintech-CN@ptglab.com](mailto:Proteintech-CN@ptglab.com)

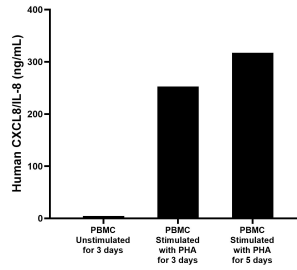
W: [ptgcn.com](http://ptgcn.com)

**This product is exclusively available under Proteintech Group brand and is not available to purchase from any other manufacturer.**

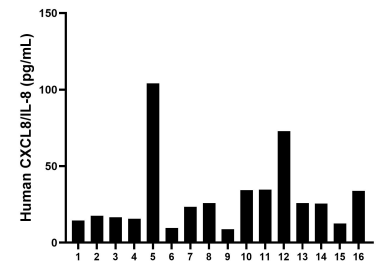
## Selected Validation Data



Sandwich ELISA standard curve of MP00830-3, Human CXCL8/IL-8 Recombinant Matched Antibody Pair - PBS only. 83903-5-PBS was coated to a plate as the capture antibody and incubated with serial dilutions of standard Eg0152. 83903-1-PBS was HRP conjugated as the detection antibody. Range: 2.73-175 pg/mL



Human peripheral blood mononuclear cells (PBMC) were cultured unstimulated or stimulated with 10  $\mu$ g/mL PHA for 3 or 5 days. For the PBMC supernatant cultured for 3 days, the mean CXCL8/IL-8 concentration was determined to be 4.46 ng/mL in unstimulated PBMC supernatant, 252.88 ng/mL in PHA stimulated PBMC supernatant. For the PBMC supernatant cultured for 5 days, the mean CXCL8/IL-8 concentration was determined to be 317.16 ng/mL in PHA stimulated PBMC



Serum of sixteen individual healthy human donors was measured. The CXCL8/IL-8 concentration of detected samples was determined to be 29.8 pg/mL with a range of 8.9 - 104.1 pg/mL