

For Research Use Only

Perilipin 1 Recombinant antibody, PBS Only (Capture/Detector)

Catalog Number:83905-1-PBS



Basic Information

Catalog Number: 83905-1-PBS	GenBank Accession Number: NM_001145311	Purification Method: Protein A purification
Size: 1 mg/ml	GeneID (NCBI): 5346	CloneNo.: 240994B2
Source: Rabbit	UNIPROT ID: O60240	
Isotype: IgG	Full Name: perilipin	
Immunogen Catalog Number: AG26426	Calculated MW: 56 kDa	

Applications

Tested Applications:
Cytometric bead array, Sandwich ELISA, Indirect ELISA,
Sample test

Species Specificity:
human

Background Information

Storage

Storage:
Store at -80°C.
The product is shipped with ice packs. Upon receipt, store it immediately at -80°C

Storage Buffer:
PBS Only

For technical support and original validation data for this product please contact:

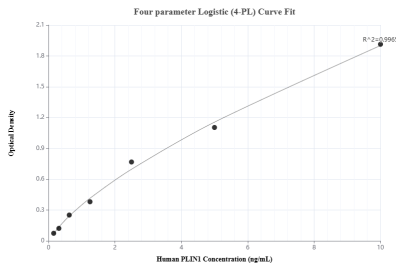
T: 4006900926

E: Proteintech-CN@ptglab.com

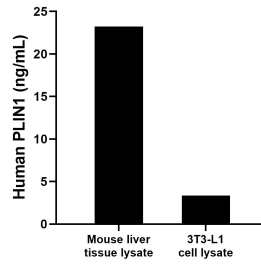
W: ptgcn.com

This product is exclusively available under Proteintech Group brand and is not available to purchase from any other manufacturer.

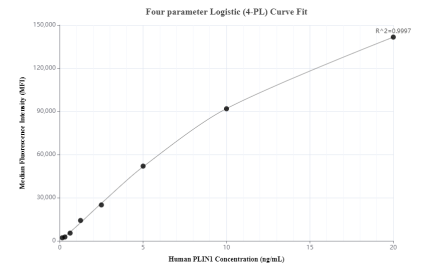
Selected Validation Data



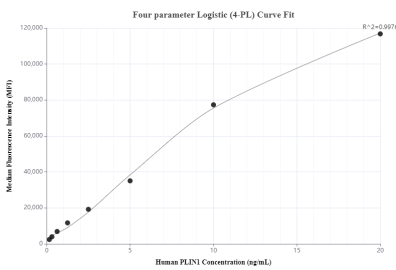
Sandwich ELISA standard curve of MP00840-2, Human PLIN1 Recombinant Matched Antibody Pair - PBS only. 83905-3-PBS was coated to a plate as the capture antibody and incubated with serial dilutions of standard Ag26426. 83905-1-PBS was HRP conjugated as the detection antibody. Range: 0.156-10 ng/mL



Mouse liver tissue lysate was measured. The human PLIN1 concentration in mouse liver tissue lysate was determined to be 23.24 ng/mL (based on a 3.70 mg/mL extract load). 3T3-L1 cell lysate was measured. The human PLIN1 concentration in 3T3-L1 cell lysate was determined to be 3.35 ng/mL (based on a 3.40 mg/mL extract load).



Cytometric bead array standard curve of MP00840-1, PLIN1 Recombinant Matched Antibody Pair, PBS Only. Capture antibody: 83905-1-PBS. Detection antibody: 83905-2-PBS. Standard: Ag26426. Range: 0.156-20 ng/mL



Cytometric bead array standard curve of MP00840-2, PLIN1 Recombinant Matched Antibody Pair, PBS Only. Capture antibody: 83905-3-PBS. Detection antibody: 83905-1-PBS. Standard: Ag26426. Range: 0.156-20 ng/mL