

For Research Use Only

# PD-L1/B7-H1 Recombinant antibody

Catalog Number: 83906-6-RR



## Basic Information

**Catalog Number:**

83906-6-RR

**Size:**

1000 µg/ml

**Source:**

Rabbit

**Isotype:**

IgG

**GenBank Accession Number:**

NM\_021893.3

**GeneID (NCBI):**

60533

**UNIPROT ID:**

Q9EP73

**Full Name:**

CD274 antigen

**Calculated MW:**

33 kDa

**Observed MW:**

45 kDa

**Purification Method:**

Protein A purification

**CloneNo.:**

240993C9

**Recommended Dilutions:**

WB 1:5000-1:50000

IHC 1:500-1:2000

## Applications

**Tested Applications:**

WB, ELISA

**Species Specificity:**

mouse

**Note-IHC: suggested antigen retrieval with TE buffer pH 9.0; (\*) Alternatively, antigen retrieval may be performed with citrate buffer pH 6.0**

**Positive Controls:**

WB : mouse heart tissue,

IHC : mouse spleen tissue,

## Background Information

Programmed cell death ligand 1 (PD-L1, CD274, or B7-H1), is the first member of B7 family to be discovered. B7 family molecules are type I transmembrane proteins belonging to the immunoglobulin superfamily. In concert with their CD28 family receptors, the B7s are key regulators of the adaptive immune response. PD-L1 is suggested as a negative regulator of T and B cell, and plays important role in mediating tolerance of lymphocytes to self-antigens. It is also involved in the costimulatory signal, essential for T-cell proliferation and production of IL10 and IFNG, in an IL2-dependent and a PD-1-independent manner.

## Storage

**Storage:**

Store at -20°C. Stable for one year after shipment.

**Storage Buffer:**

PBS with 0.02% sodium azide and 50% glycerol pH 7.3.

Aliquoting is unnecessary for -20°C storage

For technical support and original validation data for this product please contact:

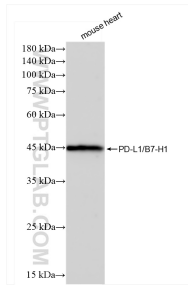
T: 4006900926

E: Proteintech-CN@ptglab.com

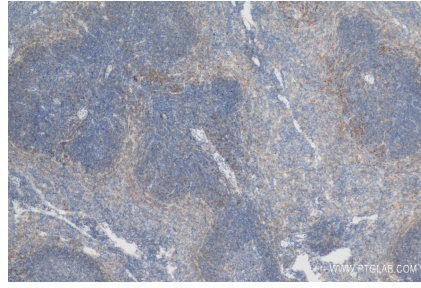
W: ptgcn.com

**This product is exclusively available under Proteintech Group brand and is not available to purchase from any other manufacturer.**

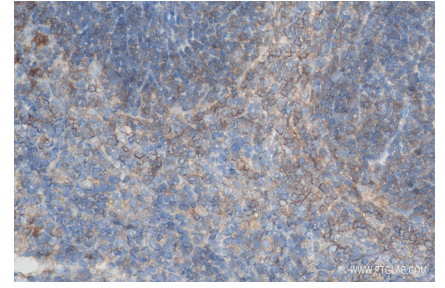
## Selected Validation Data



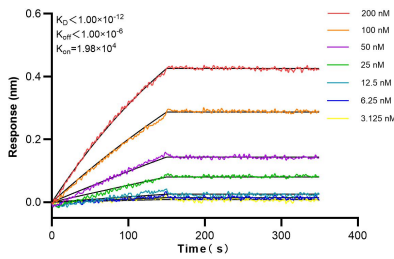
mouse heart tissue were subjected to SDS PAGE followed by western blot with 83906-6-RR (PD-L1/B7-H1 antibody) at dilution of 1:10000 incubated at room temperature for 1.5 hours.



Immunohistochemical analysis of paraffin-embedded mouse spleen tissue slide using 83906-6-RR (PD-L1/B7-H1 antibody) at dilution of 1:1000 (under 10x lens). Heat mediated antigen retrieval with Tris-EDTA buffer (pH 9.0).



Immunohistochemical analysis of paraffin-embedded mouse spleen tissue slide using 83906-6-RR (PD-L1/B7-H1 antibody) at dilution of 1:1000 (under 40x lens). Heat mediated antigen retrieval with Tris-EDTA buffer (pH 9.0).



Biolayer interferometry (BLI) kinetic assays of 83906-6-RR against Mouse PD-L1/B7-H1 were performed. The affinity constant is below 1 pM.