

For Research Use Only

# ZFP161 / ZBTB14 Recombinant antibody, PBS Only

Catalog Number:83909-5-PBS



## Basic Information

<b>Catalog Number:</b> 83909-5-PBS	<b>GenBank Accession Number:</b> BC110519	<b>Purification Method:</b> Protein A purification
<b>Size:</b> 1 mg/ml	<b>GeneID (NCBI):</b> 7541	<b>CloneNo.:</b> 240853G8
<b>Source:</b> Rabbit	<b>UNIPROT ID:</b> O43829	
<b>Isotype:</b> IgG	<b>Full Name:</b> zinc finger protein 161 homolog (mouse)	
<b>Immunogen Catalog Number:</b> AG16125	<b>Calculated MW:</b> 449 aa, 51 kDa	

## Applications

**Tested Applications:**  
IF/ICC, FC (Intra), ELISA

**Species Specificity:**  
human

## Background Information

ZBTB14, also named as ZFP161, ZNF478, is a 449 amino acid protein, which interacts with ZBTB21. ZBTB14, is a transcriptional activator of the dopamine transporter (DAT), binding its promoter at the consensus sequence 5'-CCTGCACAGTTCACGGA-3'. ZBTB14 Binds to 5'-d(GCC)(n)-3' trinucleotide repeats in promoter regions and acts as a repressor of the FMR1 gene.

## Storage

**Storage:**  
Store at -80°C.  
**The product is shipped with ice packs. Upon receipt, store it immediately at -80°C**

**Storage Buffer:**  
PBS Only

For technical support and original validation data for this product please contact:

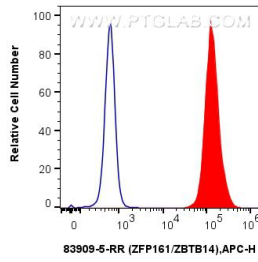
T: 4006900926

E: Proteintech-CN@ptglab.com

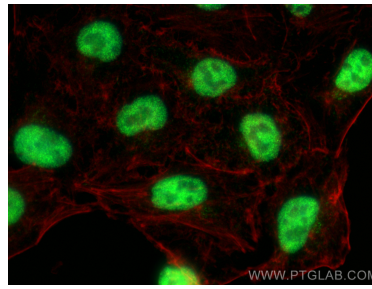
W: ptgcn.com

**This product is exclusively available under Proteintech Group brand and is not available to purchase from any other manufacturer.**

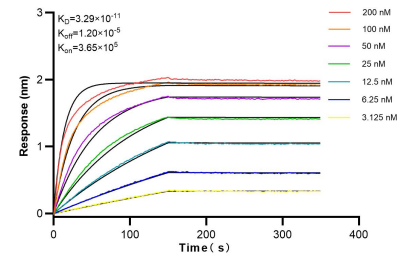
## Selected Validation Data



$1 \times 10^6$  MCF-7 cells were intracellularly stained with 0.25  $\mu$ g ZFP161 / ZBTB14 Recombinant antibody (83909-5-RR, Clone:240853G8) and APC-Conjugated AffiniPure Goat Anti-Rabbit IgG(H+L) (red), or 0.25  $\mu$ g Isotype Control (blue). Cells were fixed and permeabilized with True-Nuclear Transcription Factor Buffer Set. This data was developed using the same antibody clone with 83909-5-PBS in a different storage buffer formulation.



Immunofluorescent analysis of (4% PFA) fixed A549 cells using ZFP161 / ZBTB14 antibody (83909-5-RR, Clone: 240853G8) at dilution of 1:400 and CoraLite®488-Conjugated Goat Anti-Rabbit IgG(H+L) (SA00013-2), CL594-Phalloidin (red). This data was developed using the same antibody clone with 83909-5-PBS in a different storage buffer formulation.



Biolayer interferometry (BLI) kinetic assays of 83909-5-RR against Human ZFP161 / ZBTB14 were performed. The affinity constant is 32.9 pM.