

For Research Use Only

BUB1B Recombinant antibody

Catalog Number:83920-6-RR



Basic Information

Catalog Number: 83920-6-RR	GenBank Accession Number: BC018739	Purification Method: Protein A purification
Size: 1000 ug/ml	GeneID (NCBI): 701	CloneNo.: 240969F7
Source: Rabbit	UNIPROT ID: O60566	Recommended Dilutions: WB 1:2000-1:10000 IHC 1:200-1:800 IF/ICC 1:50-1:500
Isotype: IgG	Full Name: budding uninhibited by benzimidazoles 1 homolog beta (yeast)	
Immunogen Catalog Number: AG34182	Calculated MW: 1050 aa, 120 kDa	
	Observed MW: 130 kDa	

Applications

Tested Applications:
WB, IHC, IF/ICC, ELISA

Species Specificity:
human, mouse

Note-IHC: suggested antigen retrieval with TE buffer pH 9.0; (*) Alternatively, antigen retrieval may be performed with citrate buffer pH 6.0

Positive Controls:
WB : HeLa cells, Raji cells
IHC : mouse lung tissue,
IF/ICC : HeLa cells,

Background Information

BUB1B(Mitotic checkpoint serine/threonine-protein kinase BUB1 beta), also named BUBR1, MAD3Land SSK1, belongs to the BUB1 subfamily. Human BUB1B is a 120 kDa protein that plays a central role in the spindle assembly checkpoint (SAC), the evolutionary conserved and self-regulatory system of higher organisms that monitors and repairs defects in chromosome segregation in mitotic cells(PMID:22201036). In addition to phosphorylation, BUB1B is subjected to posttranslational modifications including acetylation(PMID:22167194). Defects in BUB1B cause premature chromatid separation trait (PCS) and mosaic variegated aneuploidy syndrome type 1 (MVA1).

Storage

Storage:
Store at -20°C. Stable for one year after shipment.

Storage Buffer:
PBS with 0.02% sodium azide and 50% glycerol pH 7.3.

Aliquoting is unnecessary for -20°C storage

For technical support and original validation data for this product please contact:

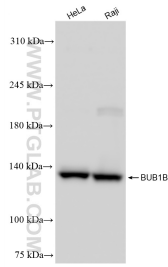
T: 4006900926

E: Proteintech-CN@ptglab.com

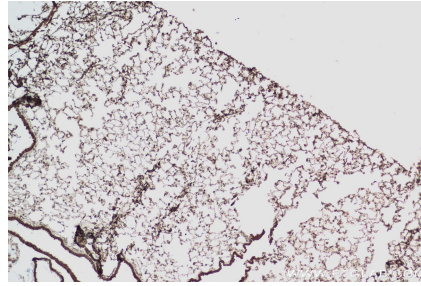
W: ptgcn.com

This product is exclusively available under Proteintech Group brand and is not available to purchase from any other manufacturer.

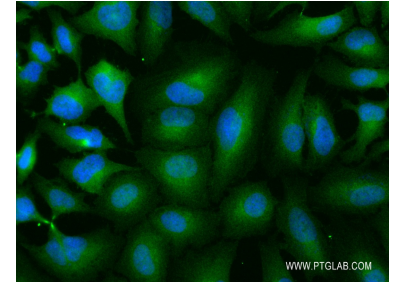
Selected Validation Data



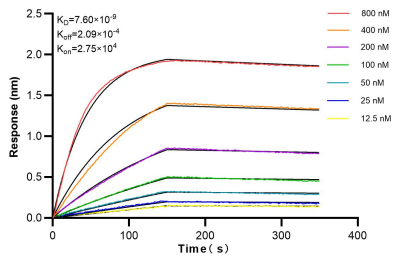
Various lysates were subjected to SDS PAGE followed by western blot with 83920-6-RR (BUB1B antibody) at dilution of 1:5000 incubated at room temperature for 1.5 hours.



Immunohistochemical analysis of paraffin-embedded mouse lung tissue slide using 83920-6-RR (BUB1B antibody) at dilution of 1:400 (under 10x lens). Heat mediated antigen retrieval with Tris-EDTA buffer (pH 9.0).



Immunofluorescent analysis of (4% PFA) fixed HeLa cells using BUB1B antibody (83920-6-RR, Clone: 240969F7) at dilution of 1:200 and CoraLite® 488-Conjugated AffiniPure Goat Anti-Rabbit IgG(H+L) (SA00013-2).



Biolayer interferometry (BLI) kinetic assays of 83920-6-RR against Human BUB1B were performed. The affinity constant is 7.60 nM.