

For Research Use Only

# CXCL1 Recombinant antibody

Catalog Number:83937-3-RR



## Basic Information

Catalog Number:

83937-3-RR

Size:

1000 ug/ml

Source:

Rabbit

Isotype:

IgG

Immunogen Catalog Number:

AG2917

GenBank Accession Number:

BC011976

GeneID (NCBI):

2919

UNIPROT ID:

P09341

Full Name:

chemokine (C-X-C motif) ligand 1  
(melanoma growth stimulating  
activity, alpha)

Calculated MW:

8 kDa to 14 kDa

Observed MW:

11 kDa

Purification Method:

Protein A purification

CloneNo.:

240990E4

Recommended Dilutions:

WB 1:1000-1:4000

## Applications

Tested Applications:

WB, ELISA

Species Specificity:

human

Positive Controls:

WB : HUVEC cells,

## Background Information

CXCL1 a is a member of CXC family and also known as keratinocyte-derived chemokines (KC) or growth-related oncogene (GRO). CXCL1 is expressed by macrophages, neutrophils and epithelial cells. CXCL1 binding specifically to the CXC chemokine receptor CXCR2, is involved in fibrogenesis and angiogenesis. This protein also plays a role in inflammation and as a chemoattractant for neutrophils. CXCL1 is upregulated in some types of human cancer, including colorectal, bladder, breast, prostate and skin cancers.

## Storage

Storage:

Store at -20°C. Stable for one year after shipment.

Storage Buffer:

PBS with 0.02% sodium azide and 50% glycerol pH 7.3.

Aliquoting is unnecessary for -20°C storage

For technical support and original validation data for this product please contact:

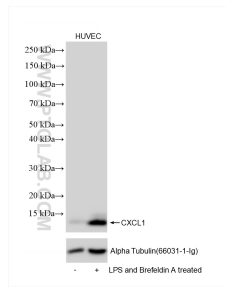
T: 4006900926

E: [Proteintech-CN@ptglab.com](mailto:Proteintech-CN@ptglab.com)

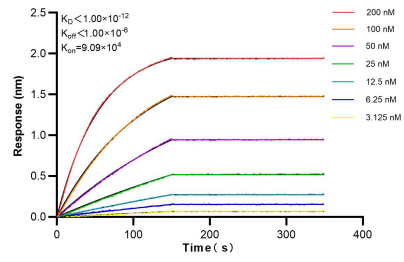
W: [ptgcn.com](http://ptgcn.com)

**This product is exclusively available under Proteintech Group brand and is not available to purchase from any other manufacturer.**

## Selected Validation Data



Untreated, LPS and Brefeldin A treated HUVEC cells were subjected to SDS PAGE followed by western blot with 83937-3-RR (CXCL1 antibody) at dilution of 1:2000 incubated at room temperature for 1.5 hours.



Biolayer interferometry (BLI) kinetic assays of 83937-3-RR against Human CXCL1 were performed. The affinity constant is below 1 pM.