

For Research Use Only

# LTBP4 Recombinant antibody, PBS Only (Capture)

Catalog Number: 83948-2-PBS



## Basic Information

<b>Catalog Number:</b> 83948-2-PBS	<b>GenBank Accession Number:</b> NM_001042544	<b>Purification Method:</b> Protein A purification
<b>Size:</b> 1 mg/ml	<b>GeneID (NCBI):</b> 8425	<b>CloneNo.:</b> 241056B6
<b>Source:</b> Rabbit	<b>UNIPROT ID:</b> Q8N2S1	
<b>Isotype:</b> IgG	<b>Full Name:</b> latent transforming growth factor beta binding protein 4	
<b>Immunogen Catalog Number:</b> AG34270	<b>Calculated MW:</b> 173 kDa	

## Applications

**Tested Applications:**  
Cytometric bead array, Indirect ELISA

**Species Specificity:**  
human

## Background Information

### Storage

**Storage:**  
Store at -80°C.  
**The product is shipped with ice packs. Upon receipt, store it immediately at -80°C**

**Storage Buffer:**  
PBS Only

For technical support and original validation data for this product please contact:

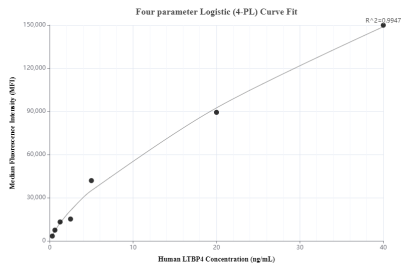
T: 4006900926

E: [Proteintech-CN@ptglab.com](mailto:Proteintech-CN@ptglab.com)

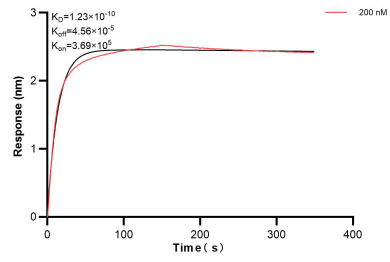
W: [ptgcn.com](http://ptgcn.com)

**This product is exclusively available under Proteintech Group brand and is not available to purchase from any other manufacturer.**

## Selected Validation Data



Cytometric bead array standard curve of MP00912-1, LTBP4 Recombinant Matched Antibody Pair, PBS Only. Capture antibody: 83948-2-PBS. Detection antibody: 83948-3-PBS. Standard: Ag34270. Range: 0.313-40 ng/mL



Biolayer interferometry (BLI) kinetic assay of 83948-2-PBS against Human LTBP4 was performed. The affinity constant is 0.123 nM.