

For Research Use Only

QSOX1/Quiescin Q6 Recombinant antibody

Catalog Number:83952-3-RR



Basic Information

Catalog Number:

83952-3-RR

Size:

1000 µg/ml

Source:

Rabbit

Isotype:

IgG

Immunogen Catalog Number:

AG3396

GenBank Accession Number:

BC017692

GeneID (NCBI):

5768

UNIPROT ID:

O00391

Full Name:

quiescin Q6 sulfhydryl oxidase 1

Calculated MW:

747 aa, 83 kDa

Observed MW:

66-83kDa

Purification Method:

Protein A purification

CloneNo.:

240946B11

Recommended Dilutions:

WB 1:5000-1:50000

Applications

Tested Applications:

WB, ELISA

Species Specificity:

human

Positive Controls:

WB : HT-1080 cells, SW 1990 cells

Background Information

QSOX1(Sulfhydryl oxidase 1) catalyzes the oxidation of sulfhydryl groups in peptide and protein thiols to disulfides with the reduction of oxygen to hydrogen peroxide. It has two isoforms with the molecular weight of 67 kDa and 83 kDa, respectively. It is detected a band of 95 kDa in HT1080 cell lines (PMID:17331072). Isoform 1 is expressed on golgi apparatus membrane and isoform 2 is secreted (PMID:10708601). The isoform1(QSOX1a) is the full length of QSOX1, approximately 78 kDa; and the isoform2(QSOX1b) is the splicing form, approximately 62kDa (PMID:14633699; 2496424). QSOX1 is highly expressed in tumor cell lines but is not expressed in adjacent normal cells (PMID:21989104).

Storage

Storage:

Store at -20°C. Stable for one year after shipment.

Storage Buffer:

PBS with 0.02% sodium azide and 50% glycerol pH 7.3.

Aliquoting is unnecessary for -20°C storage

For technical support and original validation data for this product please contact:

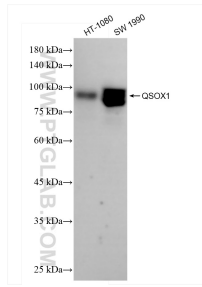
T: 4006900926

E: Proteintech-CN@ptglab.com

W: ptgcn.com

This product is exclusively available under Proteintech Group brand and is not available to purchase from any other manufacturer.

Selected Validation Data



Various lysates were subjected to SDS PAGE followed by western blot with 83952-3-RR (QSOX1 antibody) at dilution of 1:10000 incubated at room temperature for 1.5 hours.