

For Research Use Only

# PEA15 Recombinant antibody, PBS Only (Capture)

Catalog Number: 83958-2-PBS

Featured Product



## Basic Information

Catalog Number:

83958-2-PBS

Size:

1 mg/ml

Source:

Rabbit

Isotype:

IgG

Immunogen Catalog Number:

AG13782

GenBank Accession Number:

BC002426

GeneID (NCBI):

8682

UNIPROT ID:

Q15121

Full Name:

phosphoprotein enriched in astrocytes

15

Calculated MW:

130 aa, 15 kDa

Observed MW:

13-15 kDa

Purification Method:

Protein A purification

CloneNo.:

241044G8

## Applications

Tested Applications:

WB, Cytometric bead array, Indirect ELISA

Species Specificity:

human, mouse, rat

## Background Information

Phosphoprotein Enriched in Astrocytes 15 kDa (PEA15), also known as PED-15, is a small, death effector-domain (DED)-containing protein that was recently demonstrated to inhibit tumor necrosis factor- $\alpha$ -induced apoptosis and to reverse the inhibition of integrin activation due to H-Ras. PEA15 is a 15 kDa protein that is highly expressed in the nervous system with particularly high levels in astrocytes and neurons of the hippocampus. PEA15 is a cytoplasmic protein that sits at an important junction in intracellular signalling and can regulate diverse cellular processes, such as proliferation and apoptosis, dependent upon stimulation.

## Storage

Storage:

Store at  $-80^{\circ}\text{C}$ .

**The product is shipped with ice packs. Upon receipt, store it immediately at  $-80^{\circ}\text{C}$**

Storage Buffer:

PBS Only

For technical support and original validation data for this product please contact:

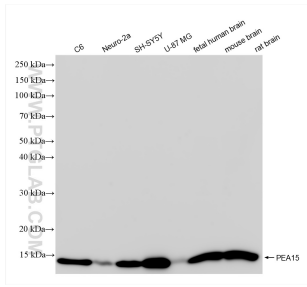
T: 4006900926

E: [Proteintech-CN@ptglab.com](mailto:Proteintech-CN@ptglab.com)

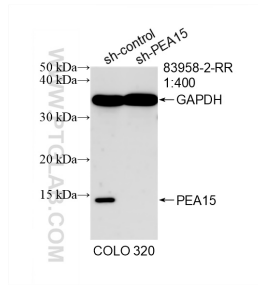
W: [ptgcn.com](http://ptgcn.com)

**This product is exclusively available under Proteintech Group brand and is not available to purchase from any other manufacturer.**

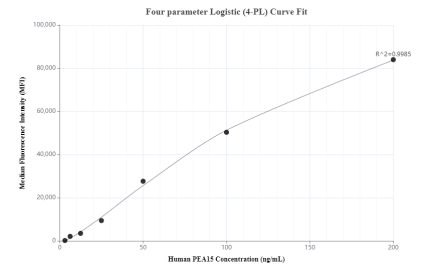
## Selected Validation Data



Various lysates were subjected to SDS PAGE followed by western blot with 83958-2-RR (PEA15 antibody) at dilution of 1:3000 incubated at room temperature for 1.5 hours. This data was developed using the same antibody clone with 83958-2-PBS in a different storage buffer formulation.



WB result of PEA15 antibody (83958-2-RR; 1:400; incubated at room temperature for 1.5 hours) with sh-Control and sh-PEA15 transfected COLO 320 cells. This data was developed using the same antibody clone with 83958-2-PBS in a different storage buffer formulation.



Cytometric bead array standard curve of MP00916-1, PEA15 Recombinant Matched Antibody Pair, PBS Only. Capture antibody: 83958-2-PBS. Detection antibody: 83958-1-PBS. Standard: Ag13782. Range: 3.125-200 ng/mL.