

For Research Use Only

PEA15 Recombinant antibody, PBS Only

Catalog Number: 83958-3-PBS



Basic Information

Catalog Number: 83958-3-PBS	GenBank Accession Number: BC002426	Purification Method: Protein A purification
Size: 1 mg/ml	GeneID (NCBI): 8682	CloneNo.: 241044H6
Source: Rabbit	UNIPROT ID: Q15121	
Isotype: IgG	Full Name: phosphoprotein enriched in astrocytes 15	
Immunogen Catalog Number: AG13782	Calculated MW: 130 aa, 15 kDa	
	Observed MW: 15 kDa	

Applications

Tested Applications:
IF/ICC, Indirect ELISA

Species Specificity:
human

Background Information

Phosphoprotein Enriched in Astrocytes 15 kDa (PEA15), also known as PED-15, is a small, death effector-domain (DED)-containing protein that was recently demonstrated to inhibit tumor necrosis factor- α -induced apoptosis and to reverse the inhibition of integrin activation due to H-Ras. PEA15 is a 15 kDa protein that is highly expressed in the nervous system with particularly high levels in astrocytes and neurons of the hippocampus. PEA15 is a cytoplasmic protein that sits at an important junction in intracellular signalling and can regulate diverse cellular processes, such as proliferation and apoptosis, dependent upon stimulation.

Storage

Storage:
Store at -80°C.
The product is shipped with ice packs. Upon receipt, store it immediately at -80°C

Storage Buffer:
PBS Only

For technical support and original validation data for this product please contact:

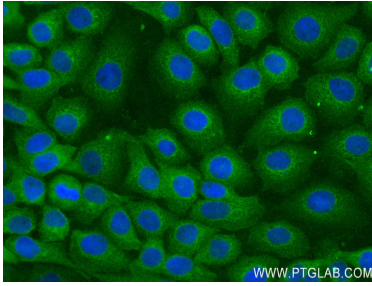
T: 4006900926

E: Proteintech-CN@ptglab.com

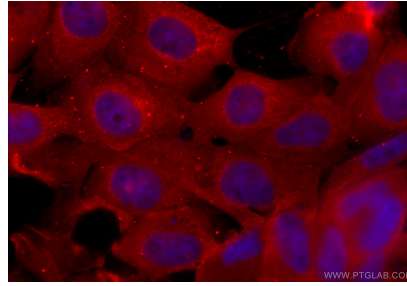
W: ptgcn.com

This product is exclusively available under Proteintech Group brand and is not available to purchase from any other manufacturer.

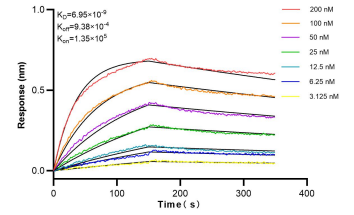
Selected Validation Data



Immunofluorescent analysis of (4% PFA) fixed A431 cells using PEA15 antibody (83958-3-RR, Clone: 241044H6) at dilution of 1:250 and CoraLite®488-Conjugated AffiniPure Goat Anti-Rabbit IgG(H+L) (SA00013-2). This data was developed using the same antibody clone with 83958-3-PBS in a different storage buffer formulation.



Immunofluorescent analysis of (4% PFA) fixed A431 cells using PEA15 antibody (83958-3-RR, Clone: 241044H6) at dilution of 1:500 and CoraLite®594-Conjugated Goat Anti-Rabbit IgG(H+L) (SA00013-4). This data was developed using the same antibody clone with 83958-3-PBS in a different storage buffer formulation.



Bi-layer interferometry (BLI) kinetic assays of 83958-3-RR against Human PEA15 were performed. The affinity constant is 6.95 nM.