

For Research Use Only

# XBP1S-specific Recombinant antibody, PBS Only (Capture)

Catalog Number:83959-7-PBS



## Basic Information

<b>Catalog Number:</b> 83959-7-PBS	<b>GenBank Accession Number:</b> BC000938	<b>Purification Method:</b> Protein A purification
<b>Size:</b> 1 mg/ml	<b>GeneID (NCBI):</b> 7494	<b>CloneNo.:</b> 241004A5
<b>Source:</b> Rabbit	<b>UNIPROT ID:</b> P17861	
<b>Isotype:</b> IgG	<b>Full Name:</b> X-box binding protein 1	
<b>Immunogen Catalog Number:</b> AG21703	<b>Calculated MW:</b> 261 aa, 29 kDa	

## Applications

**Tested Applications:**  
Sandwich ELISA, Indirect ELISA, Sample test

**Species Specificity:**  
human

## Background Information

### Storage

**Storage:**  
Store at -80°C.  
**The product is shipped with ice packs. Upon receipt, store it immediately at -80°C**

**Storage Buffer:**  
PBS Only

For technical support and original validation data for this product please contact:

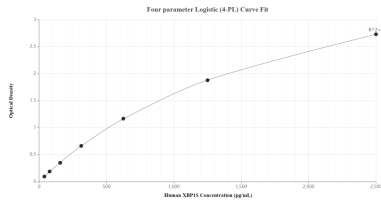
T: 4006900926

E: Proteintech-CN@ptglab.com

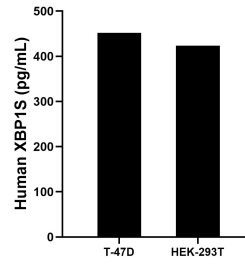
W: ptgcn.com

**This product is exclusively available under Proteintech Group brand and is not available to purchase from any other manufacturer.**

## Selected Validation Data



Sandwich ELISA standard curve of MP00917-4, Human XBP1S Recombinant Matched Antibody Pair - PBS only. 83959-7-PBS was coated to a plate as the capture antibody and incubated with serial dilutions of standard Ag21703. 83959-1-PBS was HRP conjugated as the detection antibody. Range: 39.1-2500 pg/mL.



The mean XBP1S concentration was determined to be 451.7 pg/mL in T-47D cell extract based on a 4.5 mg/mL extract load and 423.7 pg/mL in HEK-293T cell extract based on a 1.4 mg/mL extract load.