

For Research Use Only

SLPI Recombinant antibody

Catalog Number:83965-4-RR



Basic Information

Catalog Number:

83965-4-RR

Size:

1000 µg/ml

Source:

Rabbit

Isotype:

IgG

Immunogen Catalog Number:

AG1673

GenBank Accession Number:

BC020708

GeneID (NCBI):

6590

UNIPROT ID:

P03973

Full Name:

secretory leukocyte peptidase inhibitor

Calculated MW:

14 kDa

Observed MW:

14 kDa

Purification Method:

Protein A purification

CloneNo.:

241057F8

Recommended Dilutions:

WB 1:5000-1:50000

Applications

Tested Applications:

WB, ELISA

Species Specificity:

human

Positive Controls:

WB : human saliva,

Background Information

SLPI, a member of Whey acidic protein family, could mediate a variety of biological processes including cell proliferation and apoptosis, repairing reaction and immune response, with crucial roles in anti-protease, anti-inflammatory, anti-bacterial and anti-virus. SLPI is mainly expressed in epithelial cells.

Storage

Storage:

Store at -20°C. Stable for one year after shipment.

Storage Buffer:

PBS with 0.02% sodium azide and 50% glycerol pH 7.3.

Aliquoting is unnecessary for -20°C storage

For technical support and original validation data for this product please contact:

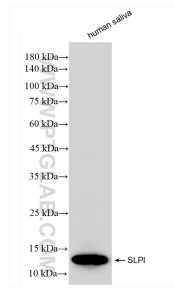
T: 4006900926

E: Proteintech-CN@ptglab.com

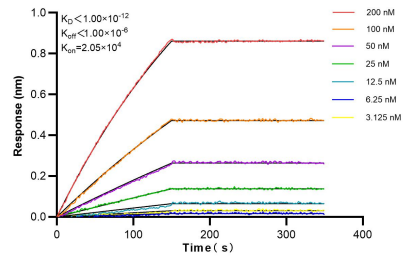
W: ptgcn.com

This product is exclusively available under Proteintech Group brand and is not available to purchase from any other manufacturer.

Selected Validation Data



human saliva were subjected to SDS PAGE followed by western blot with 83965-4-RR (SLPI antibody) at dilution of 1:10000 incubated at room temperature for 1.5 hours.



Biolayer interferometry (BLI) kinetic assays of 83965-4-RR against Human SLPI were performed. The affinity constant is below 1 pM.