

For Research Use Only

GILZ Recombinant antibody, PBS Only (Detector)

Catalog Number: 83967-4-PBS



Basic Information

Catalog Number: 83967-4-PBS	GenBank Accession Number: BC018148	Purification Method: Protein A purification
Size: 1 mg/ml	GeneID (NCBI): 1831	CloneNo.: 241024F5
Source: Rabbit	UNIPROT ID: Q99576	
Isotype: IgG	Full Name: TSC22 domain family, member 3	
Immunogen Catalog Number: AG3015	Calculated MW: 134 aa, 15 kDa	

Applications

Tested Applications:
Cytometric bead array, Sandwich ELISA, Indirect ELISA, Sample test

Species Specificity:
human

Background Information

Storage

Storage:
Store at -80°C.
The product is shipped with ice packs. Upon receipt, store it immediately at -80°C

Storage Buffer:
PBS Only

For technical support and original validation data for this product please contact:

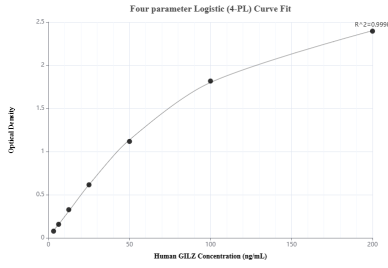
T: 4006900926

E: Proteintech-CN@ptglab.com

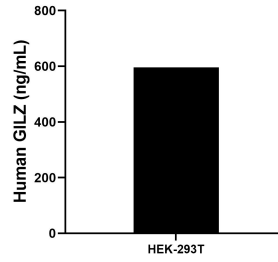
W: ptgcn.com

This product is exclusively available under Proteintech Group brand and is not available to purchase from any other manufacturer.

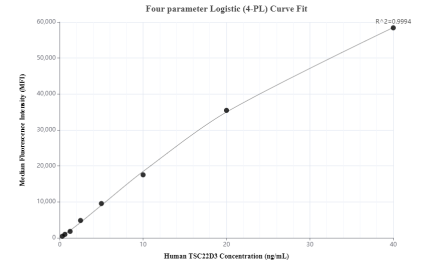
Selected Validation Data



Sandwich ELISA standard curve of MP00887-3, Human GILZ Recombinant Matched Antibody Pair - PBS only. 83967-5-PBS was coated to a plate as the capture antibody and incubated with serial dilutions of standard Ag3015. 83967-4-PBS was HRP conjugated as the detection antibody. Range: 3.13-200 ng/mL



The mean GILZ concentration was determined to be 596.32 ng/mL in HEK-293T cell extract based on a 3.2 mg/mL extract load.



Cytometric bead array standard curve of MP00887-2, TSC22D3 Recombinant Matched Antibody Pair, PBS Only. Capture antibody: 83967-1-PBS. Detection antibody: 83967-4-PBS. Standard: Ag3015. Range: 0.313-40 ng/mL