

For Research Use Only

SLC38A2 Recombinant antibody, PBS Only (Capture)

Catalog Number:83968-4-PBS



Basic Information

Catalog Number: 83968-4-PBS	GenBank Accession Number: BC040342	Purification Method: Protein A purification
Size: 1 mg/ml	GeneID (NCBI): 54407	CloneNo.: 241059G7
Source: Rabbit	UNIPROT ID: Q96QD8	
Isotype: IgG	Full Name: solute carrier family 38, member 2	
Immunogen Catalog Number: AG23082		

Applications

Tested Applications:
Cytometric bead array, Sandwich ELISA, Indirect ELISA,
Sample test

Species Specificity:
human

Background Information

Storage

Storage:
Store at -80°C.
The product is shipped with ice packs. Upon receipt, store it immediately at -80°C

Storage Buffer:
PBS Only

For technical support and original validation data for this product please contact:

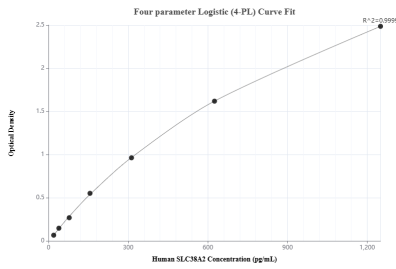
T: 4006900926

E: Proteintech-CN@ptglab.com

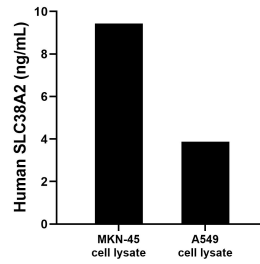
W: ptgcn.com

This product is exclusively available under Proteintech Group brand and is not available to purchase from any other manufacturer.

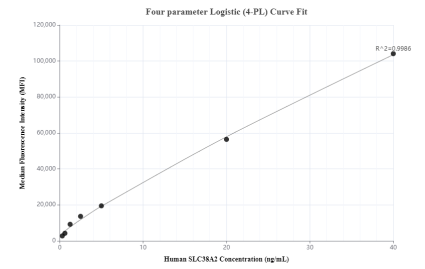
Selected Validation Data



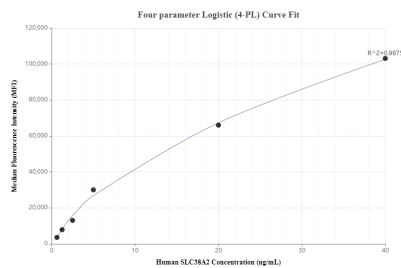
Sandwich ELISA standard curve of MP00889-3, Human SLC38A2 Recombinant Matched Antibody Pair - PBS only. 83968-4-PBS was coated to a plate as the capture antibody and incubated with serial dilutions of standard Ag23082. 83968-3-PBS was HRP conjugated as the detection antibody. Range: 19.5-1250 pg/mL



MKN-45 and A549 cell lysate were measured. The human SLC38A2 concentration of detected samples was determined to be 9.43 ng/mL (based on a 9.5 mg/mL extract load) in MKN-45 cell lysate and 3.88 ng/mL (based on a 1.0 mg/mL extract load) in A549 cell lysate.



Cytometric bead array standard curve of MP00889-2, SLC38A2 Recombinant Matched Antibody Pair, PBS Only. Capture antibody: 83968-4-PBS. Detection antibody: 83968-1-PBS. Standard: Ag23082. Range: 0.313-40 ng/mL



Cytometric bead array standard curve of MP00889-3, SLC38A2 Recombinant Matched Antibody Pair, PBS Only. Capture antibody: 83968-4-PBS. Detection antibody: 83968-3-PBS. Standard: Ag23082. Range: 0.625-40 ng/mL