

For Research Use Only

YTHDC2 Recombinant antibody, PBS Only (Detector)

Catalog Number:83970-1-PBS



Basic Information

Catalog Number: 83970-1-PBS	GenBank Accession Number: BC137285	Purification Method: Protein A purification
Size: 1 mg/ml	GeneID (NCBI): 64848	CloneNo.: 241123A9
Source: Rabbit	UNIPROT ID: Q9H6S0	
Isotype: IgG	Full Name: YTH domain containing 2	
Immunogen Catalog Number: AG26690	Observed MW: 160 kDa	

Applications

Tested Applications:
WB, IHC, FC (Intra), Cytometric bead array, Sandwich ELISA, Indirect ELISA, Sample test

Species Specificity:
human, mouse

Background Information

YTHDC2, also named as Probable ATP-dependent RNA helicase YTHDC2, is a 1430 amino acid protein, which belongs to the DEAD box helicase family. YTHDC2 specifically recognizes and binds N6-methyladenosine (m6A)-containing RNAs. M6A is a modification present at internal sites of mRNAs and some non-coding RNAs and plays a role in the efficiency of mRNA splicing, processing and stability.

Storage

Storage:
Store at -80°C.
The product is shipped with ice packs. Upon receipt, store it immediately at -80°C
Storage Buffer:
PBS Only

For technical support and original validation data for this product please contact:

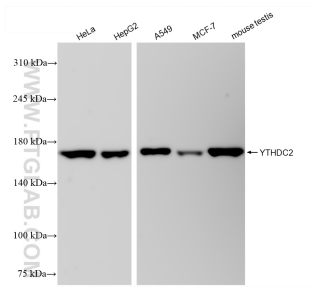
T: 4006900926

E: Proteintech-CN@ptglab.com

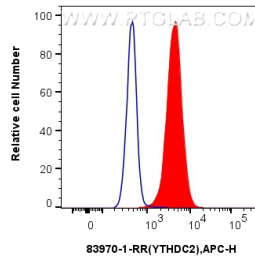
W: ptgcn.com

This product is exclusively available under Proteintech Group brand and is not available to purchase from any other manufacturer.

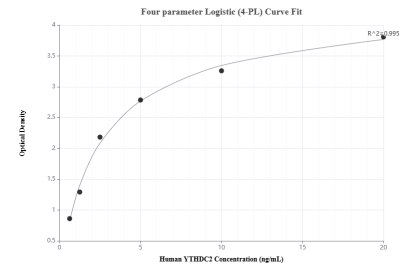
Selected Validation Data



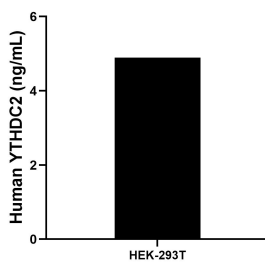
Various lysates were subjected to SDS PAGE followed by western blot with 83970-1-RR (YTHDC2 antibody) at dilution of 1:10000 incubated at room temperature for 1.5 hours. This data was developed using the same antibody clone with 83970-1-PBS in a different storage buffer formulation.



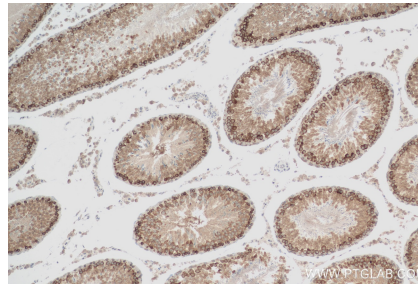
1x10⁶ HepG2 cells were intracellularly stained with 0.25 ug YTHDC2 Recombinant antibody (83970-1-RR, Clone:241123A9) and APC-Conjugated AffiniPure Goat Anti-Rabbit IgG(H+L) (red), or 0.25 ug Isotype Control (blue). Cells were fixed with 4% PFA and permeabilized with Flow Cytometry Perm Buffer (PF00011-C). This data was developed using the same antibody clone with 83970-1-PBS in a different storage buffer formulation.



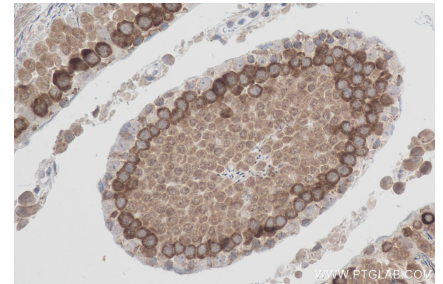
Sandwich ELISA standard curve of MP00893-3, Human YTHDC2 Recombinant Matched Antibody Pair - PBS only. 83970-3-PBS was coated to a plate as the capture antibody and incubated with serial dilutions of standard Ag26690. 83970-1-PBS was HRP conjugated as the detection antibody. Range: 0.625-20 ng/mL



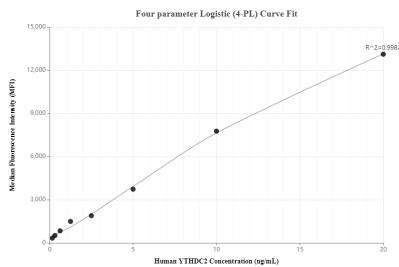
The mean YTHDC2 concentration was determined to be 4.89 ng/mL in HEK-293T cell extract based on a 1.4 mg/mL extract load.



Immunohistochemical analysis of paraffin-embedded rat testis tissue slide using 83970-1-RR (YTHDC2 antibody) at dilution of 1:200 (under 10x lens). Heat mediated antigen retrieval with Tris-EDTA buffer (pH 9.0). This data was developed using the same antibody clone with 83970-1-PBS in a different storage buffer formulation.



Immunohistochemical analysis of paraffin-embedded rat testis tissue slide using 83970-1-RR (YTHDC2 antibody) at dilution of 1:200 (under 40x lens). Heat mediated antigen retrieval with Tris-EDTA buffer (pH 9.0). This data was developed using the same antibody clone with 83970-1-PBS in a different storage buffer formulation.



Cytometric bead array standard curve of MP00893-1, YTHDC2 Recombinant Matched Antibody Pair, PBS Only. Capture antibody: 83970-4-PBS. Detection antibody: 83970-1-PBS. Standard: Ag26690. Range: 0.156-20 ng/mL