

For Research Use Only

YTHDC2 Recombinant antibody, PBS Only (Capture/Detector)

Catalog Number:83970-3-PBS



Basic Information

| | | |
|--------------------------------------|---------------------------------------|--|
| Catalog Number: 83970-3-PBS | GenBank Accession Number: BC137285 | Purification Method: Protein A purification |
| Size: 1 mg/ml | GeneID (NCBI): 64848 | CloneNo.: 241123G1 |
| Source: Rabbit | UNIPROT ID: Q9H6S0 | |
| Isotype: IgG | Full Name: YTH domain containing 2 | |
| Immunogen Catalog Number: AG26690 | | |

Applications

Tested Applications:
Cytometric bead array, Sandwich ELISA, Indirect ELISA, Sample test

Species Specificity:
human

Background Information

Storage

Storage:
Store at -80°C.
The product is shipped with ice packs. Upon receipt, store it immediately at -80°C

Storage Buffer:
PBS Only

For technical support and original validation data for this product please contact:

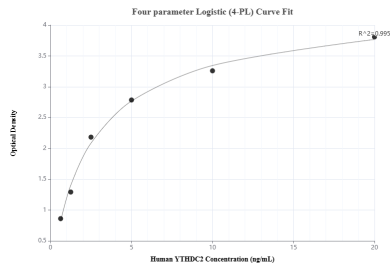
T: 4006900926

E: Proteintech-CN@ptglab.com

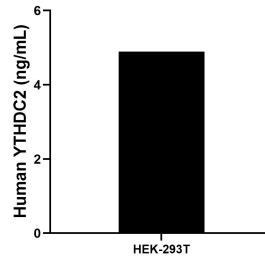
W: ptgcn.com

This product is exclusively available under Proteintech Group brand and is not available to purchase from any other manufacturer.

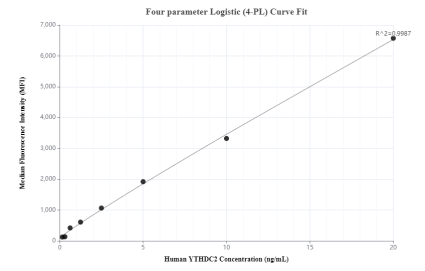
Selected Validation Data



Sandwich ELISA standard curve of MP00893-3, Human YTHDC2 Recombinant Matched Antibody Pair - PBS only. 83970-3-PBS was coated to a plate as the capture antibody and incubated with serial dilutions of standard Ag26690. 83970-1-PBS was HRP conjugated as the detection antibody. Range: 0.625-20 ng/mL



The mean YTHDC2 concentration was determined to be 4.89 ng/mL in HEK-293T cell extract based on a 1.4 mg/mL extract load.



Cytometric bead array standard curve of MP00893-2, YTHDC2 Recombinant Matched Antibody Pair, PBS Only. Capture antibody: 83970-2-PBS. Detection antibody: 83970-3-PBS. Standard: Ag26690. Range: 0.156-20 ng/mL