

For Research Use Only

Mouse Serpin E1/PAI-1 Recombinant antibody, PBS Only (Capture/Detector)

Catalog Number: 83980-2-PBS



Basic Information

Catalog Number:

83980-2-PBS

Size:

1 mg/ml

Source:

Rabbit

Isotype:

IgG

GenBank Accession Number:

GeneID (NCBI):

18787

UNIPROT ID:

P22777

Full Name:

serine (or cysteine) peptidase inhibitor, clade E, member 1

Calculated MW:

45kDa

Purification Method:

Protein A purification

CloneNo.:

241130G3

Applications

Tested Applications:

Cytometric bead array, Sandwich ELISA, Indirect ELISA, Sample test

Species Specificity:

mouse

Background Information

Storage

Storage:

Store at -80°C.

The product is shipped with ice packs. Upon receipt, store it immediately at -80°C

Storage Buffer:

PBS Only

For technical support and original validation data for this product please contact:

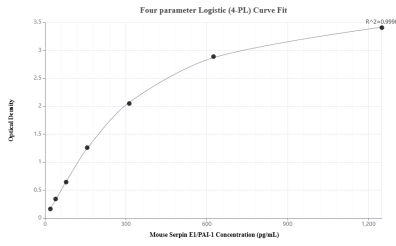
T: 4006900926

E: Proteintech-CN@ptglab.com

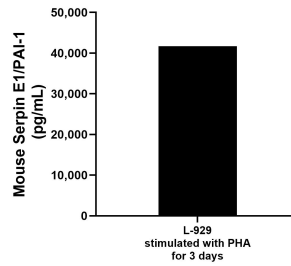
W: ptgcn.com

This product is exclusively available under Proteintech Group brand and is not available to purchase from any other manufacturer.

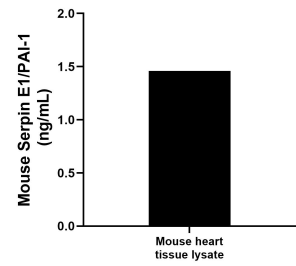
Selected Validation Data



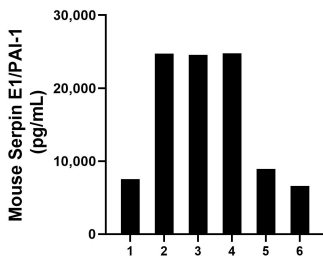
Sandwich ELISA standard curve of MP00875-4, Mouse Serpin E1/PAI-1 Recombinant Matched Antibody Pair - PBS only. 83980-2-PBS was coated to a plate as the capture antibody and incubated with serial dilutions of standard Eg1100. 83980-3-PBS was HRP conjugated as the detection antibody. Range: 19.5-1250 pg/mL



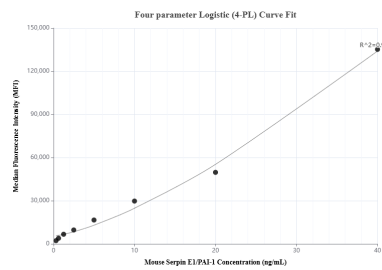
L-929 mouse fibroblast cells (1×10^6 cells/mL) were cultured for 3 days in MEM supplemented with 10% equine serum and stimulated with $10 \mu\text{g/mL}$ PHA. The cell culture supernatants was assayed for mouse Serpin E1/PAI-1 and measured 41,666.9 pg/mL



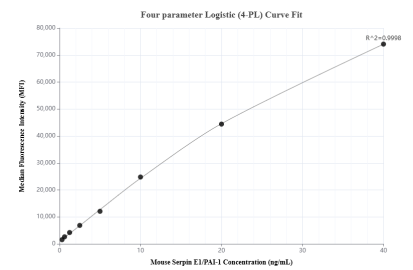
Mouse heart tissue lyaste was measured. The mouse Serpin E1/PAI-1 concentration of detected samples was determined to be 1.46 ng/mL (based on a 4.6 mg/mL extract load).



Serum of six mice was measured. The mouse Serpin E1/PAI-1 concentration of detected samples was determined to be 16,187.9 pg/mL with a range of 6,614.7 - 24,758.6 pg/mL



Cytometric bead array standard curve of MP00875-1, MOUSE Serpin E1/PAI-1 Recombinant Matched Antibody Pair, PBS Only. Capture antibody: 83980-3-PBS. Detection antibody: 83980-2-PBS. Standard: Eg1100. Range: 0.313-40 ng/mL



Cytometric bead array standard curve of MP00875-3, MOUSE Serpin E1/PAI-1 Recombinant Matched Antibody Pair, PBS Only. Capture antibody: 83980-1-PBS. Detection antibody: 83980-2-PBS. Standard: Eg1100. Range: 0.313-40 ng/mL