

For Research Use Only

# Serpin E1/PAI-1 Recombinant antibody

Catalog Number:83980-3-RR



## Basic Information

Catalog Number:

83980-3-RR

Size:

1000 µg/ml

Source:

Rabbit

Isotype:

IgG

GenBank Accession Number:

GeneID (NCBI):

18787

UNIPROT ID:

P22777

Full Name:

serine (or cysteine) peptidase inhibitor, clade E, member 1

Calculated MW:

45kDa

Observed MW:

45-50 kDa

Purification Method:

Protein A purification

CloneNo.:

241130G6

Recommended Dilutions:

WB 1:1000-1:4000

## Applications

Tested Applications:

WB, ELISA

Species Specificity:

mouse

Positive Controls:

WB : mouse placenta tissue,

## Background Information

SERPINE1, also named as Plasminogen activator inhibitor type 1 (PAI-1), is a member of the serine protease inhibitor (SERPIN) superfamily. PAI-1 is the principal inhibitor of tPA and uPA, and hence is an inhibitor of fibrinolysis. Defects in this gene are the cause of plasminogen activator inhibitor-1 deficiency (PAI-1 deficiency), and high concentrations of the gene product are associated with thrombophilia.

## Storage

Storage:

Store at -20°C. Stable for one year after shipment.

Storage Buffer:

PBS with 0.02% sodium azide and 50% glycerol pH 7.3.

Aliquoting is unnecessary for -20°C storage

For technical support and original validation data for this product please contact:

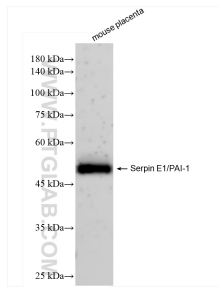
T: 4006900926

E: Proteintech-CN@ptglab.com

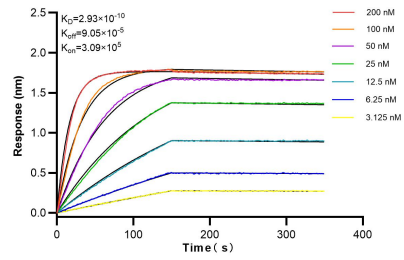
W: ptgcn.com

This product is exclusively available under Proteintech Group brand and is not available to purchase from any other manufacturer.

## Selected Validation Data



mouse placenta tissue was subjected to SDS PAGE followed by western blot with 83980-3-RR (Serpin E1/PAI-1 antibody) at dilution of 1:2000 incubated at room temperature for 1.5 hours.



Biolayer interferometry (BLI) kinetic assays of 83980-3-RR against Mouse Serpin E1/PAI-1 were performed. The affinity constant is 0.293 nM.