

For Research Use Only

# PTTG1 Recombinant antibody, PBS Only (Capture/Detector)



Catalog Number: 83981-4-PBS

## Basic Information

<b>Catalog Number:</b> 83981-4-PBS	<b>GenBank Accession Number:</b> BC101834	<b>Purification Method:</b> Protein A purification
<b>Size:</b> 1 mg/ml	<b>GeneID (NCBI):</b> 9232	<b>CloneNo.:</b> 241090G10
<b>Source:</b> Rabbit	<b>UNIPROT ID:</b> O95997	
<b>Isotype:</b> IgG	<b>Full Name:</b> pituitary tumor-transforming 1	
<b>Immunogen Catalog Number:</b> AG12670	<b>Calculated MW:</b> 202 aa, 22 kDa	

## Applications

**Tested Applications:**  
Cytometric bead array, Indirect ELISA

**Species Specificity:**  
human

## Background Information

### Storage

**Storage:**  
Store at -80°C.  
**The product is shipped with ice packs. Upon receipt, store it immediately at -80°C**

**Storage Buffer:**  
PBS Only

For technical support and original validation data for this product please contact:

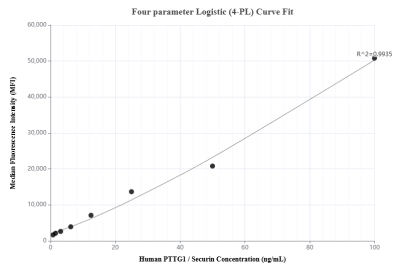
T: 4006900926

E: [Proteintech-CN@ptglab.com](mailto:Proteintech-CN@ptglab.com)

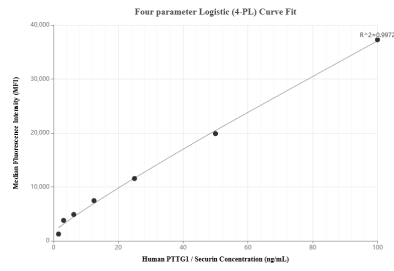
W: [ptgcn.com](http://ptgcn.com)

**This product is exclusively available under Proteintech Group brand and is not available to purchase from any other manufacturer.**

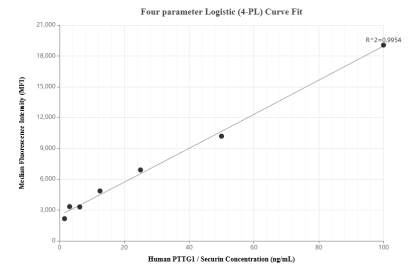
## Selected Validation Data



Cytometric bead array standard curve of MP00876-1, Securin Recombinant Matched Antibody Pair, PBS Only. Capture antibody: 83981-2-PBS. Detection antibody: 83981-4-PBS. Standard: Ag12670. Range: 0.78-100 ng/mL



Cytometric bead array standard curve of MP00876-2, Securin Recombinant Matched Antibody Pair, PBS Only. Capture antibody: 83981-1-PBS. Detection antibody: 83981-4-PBS. Standard: Ag12670. Range: 1.56-100 ng/mL



Cytometric bead array standard curve of MP00876-3, Securin Recombinant Matched Antibody Pair, PBS Only. Capture antibody: 83981-4-PBS. Detection antibody: 83981-3-PBS. Standard: Ag12670. Range: 1.56-100 ng/mL