

For Research Use Only

PI16 Recombinant antibody, PBS Only (Detector)

Catalog Number: 83985-7-PBS



Basic Information

Catalog Number: 83985-7-PBS	GenBank Accession Number: BC022399	Purification Method: Protein A purification
Size: 1 mg/ml	GeneID (NCBI): 221476	CloneNo.: 241014F6
Source: Rabbit	UNIPROT ID: Q6UXB8	
Isotype: IgG	Full Name: peptidase inhibitor 16	
Immunogen Catalog Number: AG2925	Calculated MW: 463 aa, 49 kDa	

Applications

Tested Applications:
Sandwich ELISA, Indirect ELISA, Sample test

Species Specificity:
human

Background Information

Storage

Storage:
Store at -80°C.
The product is shipped with ice packs. Upon receipt, store it immediately at -80°C

Storage Buffer:
PBS Only

For technical support and original validation data for this product please contact:

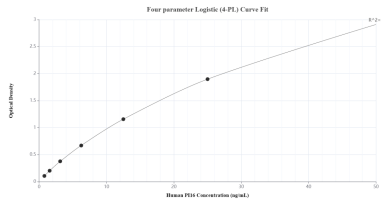
T: 4006900926

E: Proteintech-CN@ptglab.com

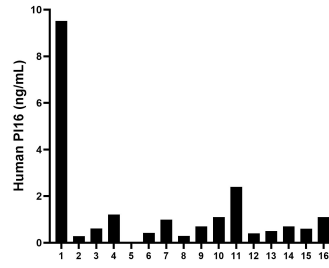
W: ptgcn.com

This product is exclusively available under Proteintech Group brand and is not available to purchase from any other manufacturer.

Selected Validation Data



Sandwich ELISA standard curve of MP00888-4, Human PI16 Recombinant Matched Antibody Pair - PBS only. 83985-3-PBS was coated to a plate as the capture antibody and incubated with serial dilutions of standard Ag2925. 83985-7-PBS was HRP conjugated as the detection antibody. Range: 0.781-50 ng/mL



Serum of sixteen individual healthy human donors was measured. The PI16 concentration of detected samples was determined to be 1.30 ng/mL with a range of 0.01-9.52 ng/mL.