

For Research Use Only

NFE2L1 Recombinant antibody, PBS Only (Capture/Detector)

Catalog Number:83987-1-PBS



Basic Information

Catalog Number:

83987-1-PBS

Size:

1 mg/ml

Source:

Rabbit

Isotype:

IgG

Immunogen Catalog Number:

AG0525

GenBank Accession Number:

BC010623

GeneID (NCBI):

4779

UNIPROT ID:

Q14494

Full Name:

nuclear factor (erythroid-derived 2)-like 1

Calculated MW:

772 aa, 85 kDa

Purification Method:

Protein A purification

CloneNo.:

241089A12

Applications

Tested Applications:

Cytometric bead array, Sandwich ELISA, Indirect ELISA, Sample test

Species Specificity:

human

Background Information

Storage

Storage:

Store at -80°C.

The product is shipped with ice packs. Upon receipt, store it immediately at -80°C

Storage Buffer:

PBS Only

For technical support and original validation data for this product please contact:

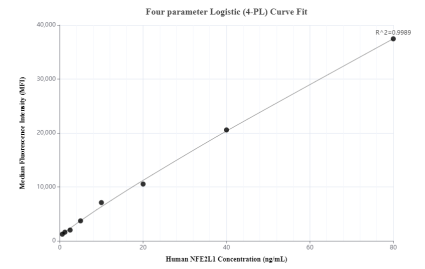
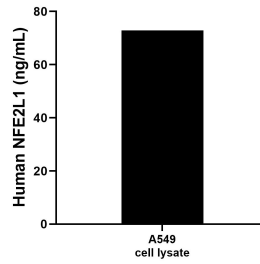
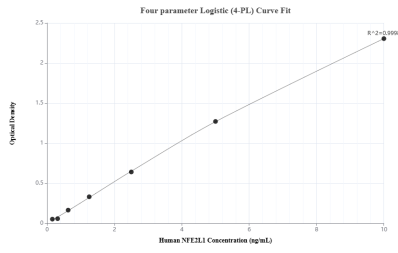
T: 4006900926

E: Proteintech-CN@ptglab.com

W: ptgcn.com

This product is exclusively available under Proteintech Group brand and is not available to purchase from any other manufacturer.

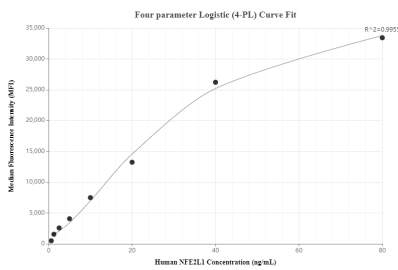
Selected Validation Data



Sandwich ELISA standard curve of MP00878-3, Human NFE2L1 Recombinant Matched Antibody Pair - PBS only. 83987-1-PBS was coated to a plate as the capture antibody and incubated with serial dilutions of standard Ag0525. 83987-4-PBS was HRP conjugated as the detection antibody. Range: 0.156-10 ng/mL

A549 cell lysate was measured. The human NFE2L1 concentration of detected samples was determined to be 72.89 ng/mL (based on a 2.2 mg/mL extract load).

Cytometric bead array standard curve of MP00878-1, NFE2L1 Recombinant Matched Antibody Pair, PBS Only. Capture antibody: 83987-1-PBS. Detection antibody: 83987-3-PBS. Standard: Ag0525. Range: 0.625-80 ng/mL



Cytometric bead array standard curve of MP00878-2, NFE2L1 Recombinant Matched Antibody Pair, PBS Only. Capture antibody: 83987-2-PBS. Detection antibody: 83987-1-PBS. Standard: Ag0525. Range: 0.625-80 ng/mL