

For Research Use Only

NFE2L1 Recombinant antibody

Catalog Number:83987-2-RR



Basic Information

Catalog Number: 83987-2-RR	GenBank Accession Number: BC010623	Purification Method: Protein A purification
Size: 1000 µg/ml	GeneID (NCBI): 4779	CloneNo.: 241089D1
Source: Rabbit	UNIPROT ID: Q14494	Recommended Dilutions: IF/ICC 1:125-1:500
Isotype: IgG	Full Name: nuclear factor (erythroid-derived 2)-like 1	
Immunogen Catalog Number: AG0525	Calculated MW: 772 aa, 85 kDa	

Applications

Tested Applications: IF/ICC, ELISA	Positive Controls: IF/ICC : HepG2 cells,
Species Specificity: human	

Background Information

Storage

Storage:
Store at -20°C. Stable for one year after shipment.
Storage Buffer:
PBS with 0.02% sodium azide and 50% glycerol pH 7.3.
Aliquoting is unnecessary for -20°C storage

For technical support and original validation data for this product please contact:

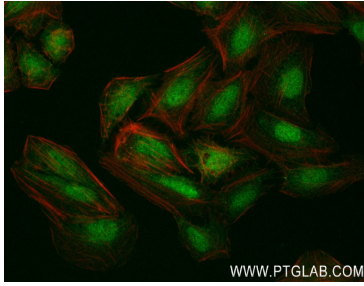
T: 4006900926

E: Proteintech-CN@ptglab.com

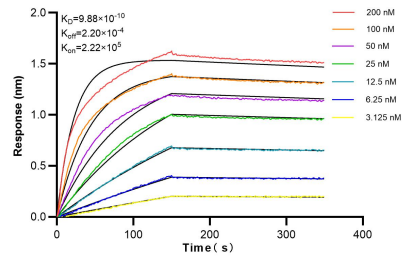
W: ptgcn.com

This product is exclusively available under Proteintech Group brand and is not available to purchase from any other manufacturer.

Selected Validation Data



Immunofluorescent analysis of (4% PFA) fixed HepG2 cells using NFE2L1 antibody (83987-2-RR, Clone: 241089D1) at dilution of 1:250 and CoraLite®488-Conjugated AffiniPure Goat Anti-Rabbit IgG(H+L) (SA00013-2), CL594-Phalloidin (red).



Biolayer interferometry (BLI) kinetic assays of 83987-2-RR against Human NFE2L1 were performed. The affinity constant is 0.988 nM.