

For Research Use Only

DPYSL2 Recombinant antibody, PBS Only (Capture)

Catalog Number:83990-3-PBS



Basic Information

Catalog Number: 83990-3-PBS	GenBank Accession Number: BC067109	Purification Method: Protein A purification
Size: 1 mg/ml	GeneID (NCBI): 1808	CloneNo.: 241088D3
Source: Rabbit	UNIPROT ID: Q16555	
Isotype: IgG	Full Name: dihydropyrimidinase-like 2	
Immunogen Catalog Number: AG5987	Calculated MW: 62 kDa	

Applications

Tested Applications:
Sandwich ELISA, Indirect ELISA, Sample test

Species Specificity:
human

Background Information

Storage

Storage:
Store at -80°C.
The product is shipped with ice packs. Upon receipt, store it immediately at -80°C

Storage Buffer:
PBS Only

For technical support and original validation data for this product please contact:

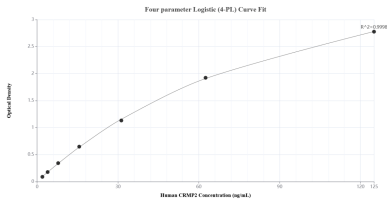
T: 4006900926

E: Proteintech-CN@ptglab.com

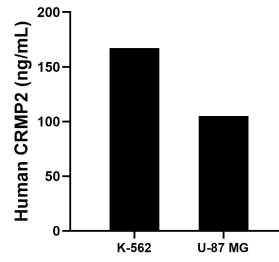
W: ptgcn.com

This product is exclusively available under Proteintech Group brand and is not available to purchase from any other manufacturer.

Selected Validation Data



Sandwich ELISA standard curve of MP00886-2, Human CRMP2 Recombinant Matched Antibody Pair - PBS only. 83990-3-PBS was coated to a plate as the capture antibody and incubated with serial dilutions of standard Ag5987. 83990-4-PBS was HRP conjugated as the detection antibody. Range: 1.95-125 ng/mL



The mean CRMP2 concentration was determined to be 167.28 ng/mL in K-562 cell extract based on a 2.10 mg/mL extract load and 105.42 ng/mL in U-87 MG cell extract based on a 3.40 mg/mL extract load.