

For Research Use Only

# E-cadherin Recombinant antibody, PBS Only (Capture)

Catalog Number:83991-6-PBS



## Basic Information

Catalog Number:

83991-6-PBS

Size:

1 mg/ml

Source:

Rabbit

Isotype:

IgG

GenBank Accession Number:

NM\_004360.5

GeneID (NCBI):

999

UNIPROT ID:

P12830-1

Full Name:

cadherin 1, type 1, E-cadherin (epithelial)

Calculated MW:

97 kDa

Purification Method:

Protein A purification

CloneNo.:

241098D7

## Applications

Tested Applications:

Sandwich ELISA, Indirect ELISA, Sample test

Species Specificity:

human

## Background Information

### Storage

Storage:

Store at -80°C.

**The product is shipped with ice packs. Upon receipt, store it immediately at -80°C**

Storage Buffer:

PBS Only

For technical support and original validation data for this product please contact:

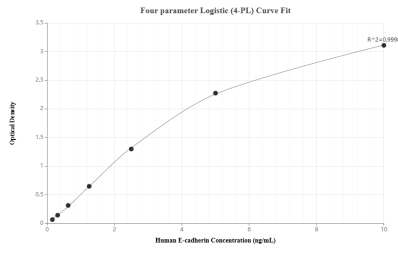
T: 4006900926

E: [Proteintech-CN@ptglab.com](mailto:Proteintech-CN@ptglab.com)

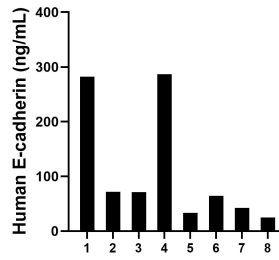
W: [ptgcn.com](http://ptgcn.com)

**This product is exclusively available under Proteintech Group brand and is not available to purchase from any other manufacturer.**

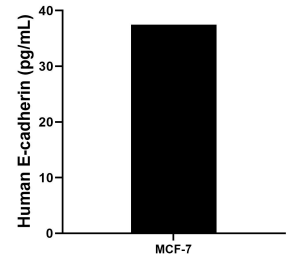
## Selected Validation Data



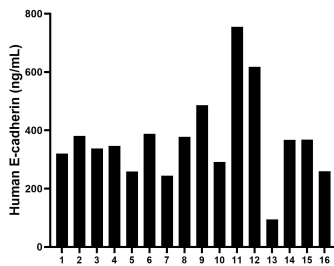
Sandwich ELISA standard curve of MP00187-7, Human E-cadherin Recombinant Matched Antibody Pair - PBS only. 83991-6-PBS was coated to a plate as the capture antibody and incubated with serial dilutions of standard Eg1112. 83991-5-PBS was HRP conjugated as the detection antibody. Range: 0.156-10 ng/mL



Urine of eight individual healthy human donors was measured. The human E-cadherin concentration of detected samples was determined to be 109.49 ng/mL with a range of 24.87 - 286.93 ng/mL



MCF-7 human breast cancer cells ( $5 \times 10^6$  cells/mL) were cultured in DMEM and 10% fetal bovine serum, 4 mM L-glutamine, 4500 mg/L glucose, 100 U/mL penicillin, and 100  $\mu$ g/mL streptomycin sulfate. An aliquot of the cell culture supernate was removed, assayed for human E-cadherin, and measured 37.5 pg/mL



Serum of sixteen individual healthy human donors was measured. The human E-cadherin concentration of detected samples was determined to be 368.32 ng/mL with a range of 94.16 - 755.34 ng/mL