

For Research Use Only

PAR2 Recombinant antibody, PBS Only (Capture)

Catalog Number: 84006-2-PBS



Basic Information

Catalog Number: 84006-2-PBS	GenBank Accession Number: BC018130	Purification Method: Protein A purification
Size: 1 mg/ml	GeneID (NCBI): 2150	CloneNo.: 241116C6
Source: Rabbit	UNIPROT ID: P55085	
Isotype: IgG	Full Name: coagulation factor II (thrombin) receptor-like 1	
Immunogen Catalog Number: AG2801	Calculated MW: 397 aa, 44 kDa	

Applications

Tested Applications:
Cytometric bead array, Sandwich ELISA, Indirect ELISA,
Sample test

Species Specificity:
human

Background Information

Storage

Storage:
Store at -80°C.
The product is shipped with ice packs. Upon receipt, store it immediately at -80°C

Storage Buffer:
PBS Only

For technical support and original validation data for this product please contact:

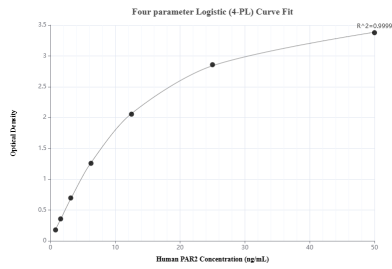
T: 4006900926

E: Proteintech-CN@ptglab.com

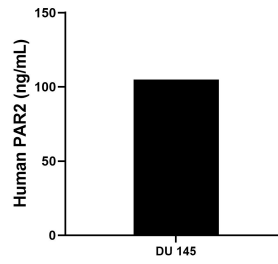
W: ptgcn.com

This product is exclusively available under Proteintech Group brand and is not available to purchase from any other manufacturer.

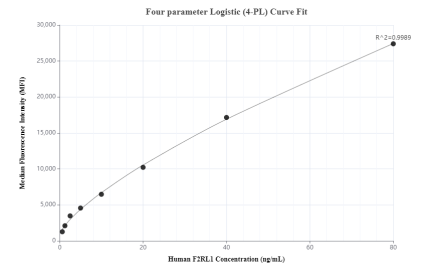
Selected Validation Data



Sandwich ELISA standard curve of MP00939-3, Human PAR2 Recombinant Matched Antibody Pair - PBS only. 84006-2-PBS was coated to a plate as the capture antibody and incubated with serial dilutions of standard Ag2801. 84006-1-PBS was HRP conjugated as the detection antibody. Range: 0.781-50 ng/mL



The mean PAR2 concentration was determined to be 104.90 ng/mL in DU 145 cell extract based on a 1.0 mg/mL extract load.



Cytometric bead array standard curve of MP00939-3, F2RL1/PAR2 Recombinant Matched Antibody Pair, PBS Only. Capture antibody: 84006-2-PBS. Detection antibody: 84006-1-PBS. Standard: Ag2801. Range: 0.625-80 ng/mL