

For Research Use Only

ABR Recombinant antibody, PBS Only (Capture)

Catalog Number: 84011-4-PBS



Basic Information

Catalog Number: 84011-4-PBS	GenBank Accession Number: NM_021962	Purification Method: Protein A purification
Size: 1 mg/ml	GeneID (NCBI): 29	CloneNo.: 241121G12
Source: Rabbit	UNIPROT ID: Q12979	
Isotype: IgG	Full Name: active BCR-related gene	
Immunogen Catalog Number: AG29522	Calculated MW: 98 kDa	

Applications

Tested Applications:
Cytometric bead array, Sandwich ELISA, Indirect ELISA,
Sample test

Species Specificity:
human

Background Information

Storage

Storage:
Store at -80°C.
The product is shipped with ice packs. Upon receipt, store it immediately at -80°C

Storage Buffer:
PBS Only

For technical support and original validation data for this product please contact:

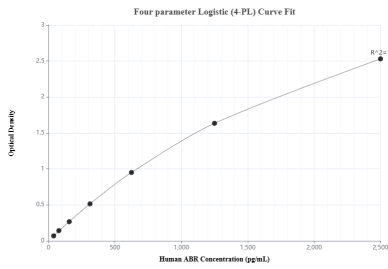
T: 4006900926

E: Proteintech-CN@ptglab.com

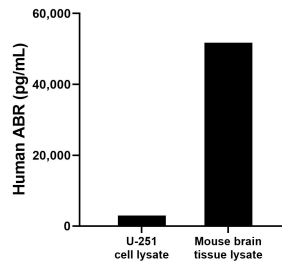
W: ptgcn.com

This product is exclusively available under Proteintech Group brand and is not available to purchase from any other manufacturer.

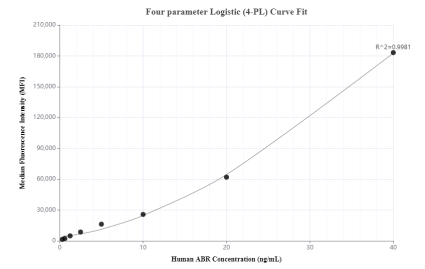
Selected Validation Data



Sandwich ELISA standard curve of MP00961-4, Human ABR Recombinant Matched Antibody Pair - PBS only. 84011-4-PBS was coated to a plate as the capture antibody and incubated with serial dilutions of standard Ag29522. 84011-1-PBS was HRP conjugated as the detection antibody. Range: 3.91-2500 pg/mL



U-251 cell lysate and mouse brain tissue lysate were measured. The human ABR concentration of detected samples was determined to be 2,939.5 pg/mL (based on a 3.30 mg/mL extract load) in U-251 cell lysate and 51,727.8 pg/mL (based on a 4.60 mg/mL extract load) in mouse brain tissue lysate.



Cytometric bead array standard curve of MP00961-2, ABR Recombinant Matched Antibody Pair, PBS Only. Capture antibody: 84011-4-PBS. Detection antibody: 84011-5-PBS. Standard: Ag29522. Range: 0.313-40 ng/mL