

For Research Use Only

SP100 Recombinant antibody, PBS Only (Detector)

Catalog Number: 84012-1-PBS



Basic Information

Catalog Number: 84012-1-PBS	GenBank Accession Number: BC011562	Purification Method: Protein A purification
Size: 1 mg/ml	GeneID (NCBI): 6672	CloneNo.: 241153B4
Source: Rabbit	UNIPROT ID: P23497	
Isotype: IgG	Full Name: SP100 nuclear antigen	
Immunogen Catalog Number: AG35193	Calculated MW: 879 aa, 100 kDa	

Applications

Tested Applications:
Cytometric bead array, Sandwich ELISA, Indirect ELISA,
Sample test

Species Specificity:
human

Background Information

Storage

Storage:
Store at -80°C.
The product is shipped with ice packs. Upon receipt, store it immediately at -80°C

Storage Buffer:
PBS Only

For technical support and original validation data for this product please contact:

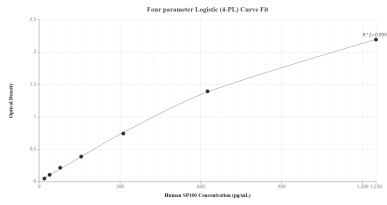
T: 4006900926

E: Proteintech-CN@ptglab.com

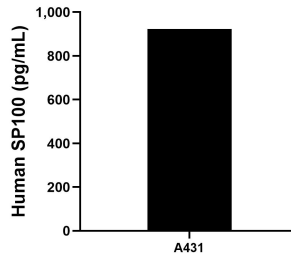
W: ptgcn.com

This product is exclusively available under Proteintech Group brand and is not available to purchase from any other manufacturer.

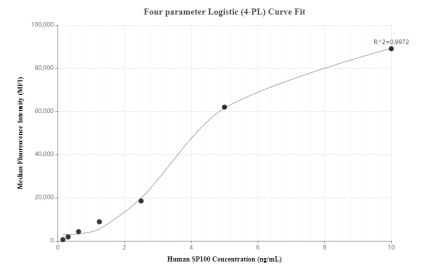
Selected Validation Data



Sandwich ELISA standard curve of MP00964-4, Human SP100 Recombinant Matched Antibody Pair - PBS only. 84012-6-PBS was coated to a plate as the capture antibody and incubated with serial dilutions of standard Ag35193. 84012-1-PBS was HRP conjugated as the detection antibody. Range: 19.5-1250 pg/mL.



The mean SP100 concentration was determined to be 922.7 pg/mL in A431 cell extract based on a 1.5 mg/mL extract load.



Cytometric bead array standard curve of MP00964-3, SP100 Recombinant Matched Antibody Pair, PBS Only. Capture antibody: 84012-2-PBS. Detection antibody: 84012-1-PBS. Standard: Ag35193. Range: 0.156-10 ng/mL.