

For Research Use Only

# KIF5A Recombinant antibody, PBS Only (Capture/Detector)

Catalog Number: 84013-3-PBS



## Basic Information

<b>Catalog Number:</b> 84013-3-PBS	<b>GenBank Accession Number:</b> BC146670	<b>Purification Method:</b> Protein A purification
<b>Size:</b> 1 mg/ml	<b>GeneID (NCBI):</b> 3798	<b>CloneNo.:</b> 241124F12
<b>Source:</b> Rabbit	<b>UNIPROT ID:</b> Q12840	
<b>Isotype:</b> IgG	<b>Full Name:</b> kinesin family member 5A	
<b>Immunogen Catalog Number:</b> AG15518	<b>Calculated MW:</b> 1032 aa, 117 kDa	

## Applications

**Tested Applications:**  
Cytometric bead array, Sandwich ELISA, Indirect ELISA,  
Sample test

**Species Specificity:**  
human

## Background Information

### Storage

**Storage:**  
Store at -80°C.  
**The product is shipped with ice packs. Upon receipt, store it immediately at -80°C**

**Storage Buffer:**  
PBS Only

For technical support and original validation data for this product please contact:

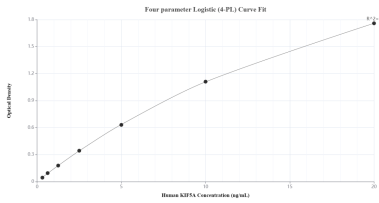
T: 4006900926

E: [Proteintech-CN@ptglab.com](mailto:Proteintech-CN@ptglab.com)

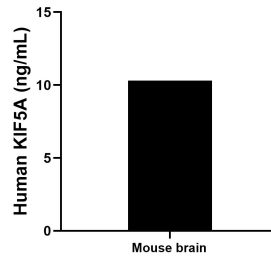
W: [ptgcn.com](http://ptgcn.com)

**This product is exclusively available under Proteintech Group brand and is not available to purchase from any other manufacturer.**

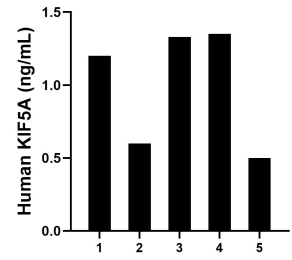
## Selected Validation Data



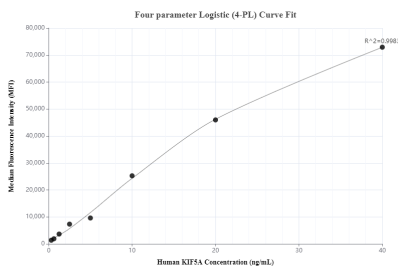
Sandwich ELISA standard curve of MP00967-4, Human KIF5A Recombinant Matched Antibody Pair - PBS only. 84013-3-PBS was coated to a plate as the capture antibody and incubated with serial dilutions of standard Ag15518. 84013-6-PBS was HRP conjugated as the detection antibody. Range: 0.313-20 ng/mL.



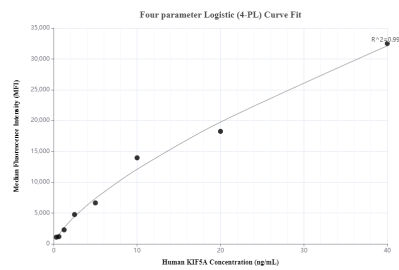
The mean KIF5A concentration was determined to be 10.30 ng/mL in mouse brain cell extract based on a 4.60 mg/mL extract load.



Serum of five individual healthy human donors was measured. The KIF5A concentration of detected samples was determined to be 1.00 ng/mL with a range of 0.50 - 1.35 ng/mL.



Cytometric bead array standard curve of MP00967-1, KIF5A Recombinant Matched Antibody Pair, PBS Only. Capture antibody: 84013-4-PBS. Detection antibody: 84013-3-PBS. Standard: Ag15518. Range: 0.313-40 ng/mL.



Cytometric bead array standard curve of MP00967-3, KIF5A Recombinant Matched Antibody Pair, PBS Only. Capture antibody: 84013-3-PBS. Detection antibody: 84013-2-PBS. Standard: Ag15518. Range: 0.313-40 ng/mL.