

For Research Use Only

SRP54 Recombinant antibody, PBS Only (Capture/Detector)

Catalog Number: 84014-2-PBS



Basic Information

Catalog Number: 84014-2-PBS	GenBank Accession Number: BC003389	Purification Method: Protein A purification
Size: 1 mg/ml	GeneID (NCBI): 6729	CloneNo.: 241125C4
Source: Rabbit	UNIPROT ID: P61011	
Isotype: IgG	Full Name: signal recognition particle 54kDa	
Immunogen Catalog Number: AG2327	Calculated MW: 54 kDa	

Applications

Tested Applications:
Cytometric bead array, Sandwich ELISA, Indirect ELISA,
Sample test

Species Specificity:
human

Background Information

Storage

Storage:
Store at -80°C.
The product is shipped with ice packs. Upon receipt, store it immediately at -80°C

Storage Buffer:
PBS Only

For technical support and original validation data for this product please contact:

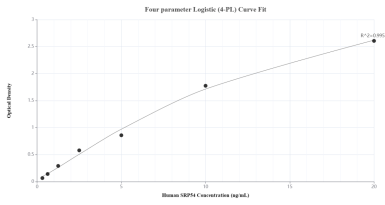
T: 4006900926

E: Proteintech-CN@ptglab.com

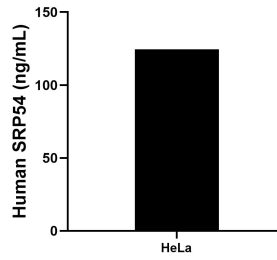
W: ptgcn.com

This product is exclusively available under Proteintech Group brand and is not available to purchase from any other manufacturer.

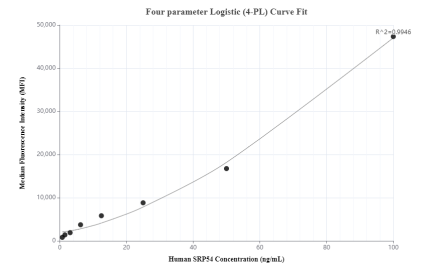
Selected Validation Data



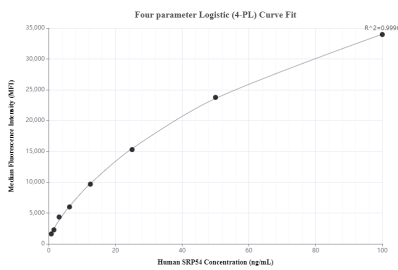
Sandwich ELISA standard curve of MP00955-4, Human SRP54 Recombinant Matched Antibody Pair - PBS only. 84014-2-PBS was coated to a plate as the capture antibody and incubated with serial dilutions of standard Ag2327. 84014-5-PBS was HRP conjugated as the detection antibody. Range: 0.313-20 ng/mL



The mean SRP54 concentration was determined to be 124.39 ng/mL in HeLa cell extract based on a 1.20 mg/mL extract load.



Cytometric bead array standard curve of MP00955-1, SRP54 Recombinant Matched Antibody Pair, PBS Only. Capture antibody: 84014-4-PBS. Detection antibody: 84014-2-PBS. Standard: Ag2327. Range: 0.78-100 ng/mL



Cytometric bead array standard curve of MP00955-2, SRP54 Recombinant Matched Antibody Pair, PBS Only. Capture antibody: 84014-2-PBS. Detection antibody: 84014-3-PBS. Standard: Ag2327. Range: 0.78-100 ng/mL