

For Research Use Only

# REPS2 Recombinant antibody

Catalog Number: 84016-4-RR



## Basic Information

<b>Catalog Number:</b> 84016-4-RR	<b>GenBank Accession Number:</b> NM_004726	<b>Purification Method:</b> Protein A purification
<b>Size:</b> 400 µg/ml	<b>GeneID (NCBI):</b> 9185	<b>CloneNo.:</b> 241136D3
<b>Source:</b> Rabbit	<b>UNIPROT ID:</b> Q8NFH8	<b>Recommended Dilutions:</b> IF/ICC 1:50-1:500
<b>Isotype:</b> IgG	<b>Full Name:</b> RALBP1 associated Eps domain containing 2	
<b>Immunogen Catalog Number:</b> AG33764	<b>Calculated MW:</b> 72KD	

## Applications

<b>Tested Applications:</b> IF/ICC, ELISA	<b>Positive Controls:</b> IF/ICC : LNCaP cells,
<b>Species Specificity:</b> human	

## Background Information

REPS2 is part of a protein complex that regulates the endocytosis of growth factor receptors. The encoded protein directly interacts with a GTPase activating protein that functions downstream of the small G protein Ral. Its expression can negatively affect receptor internalization and inhibit growth factor signaling. There are 4 isoforms of the protein with two short (58 kDa) isoforms comprising 521 or 522 amino acid residues and two long (78 kDa) ones of 659 or 660 residues.

## Storage

**Storage:**  
Store at -20°C. Stable for one year after shipment.  
**Storage Buffer:**  
PBS with 0.02% sodium azide and 50% glycerol pH 7.3.  
Aliquoting is unnecessary for -20°C storage

For technical support and original validation data for this product please contact:

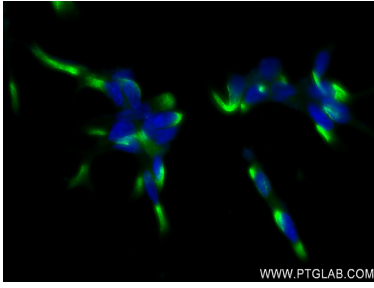
T: 4006900926

E: [Proteintech-CN@ptglab.com](mailto:Proteintech-CN@ptglab.com)

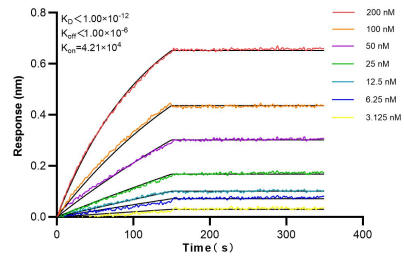
W: [ptgcn.com](http://ptgcn.com)

This product is exclusively available under Proteintech Group brand and is not available to purchase from any other manufacturer.

## Selected Validation Data



Immunofluorescent analysis of (4% PFA) fixed LNCaP cells using REPS2 antibody (84016-4-RR, Clone: 241136D3) at dilution of 1:100 and CoraLite@488-Conjugated Goat Anti-Rabbit IgG(H+L) (SA00013-2).



Biolayer interferometry (BLI) kinetic assays of 84016-4-RR against Human REPS2 were performed. The affinity constant is below 1 pM.