

For Research Use Only

SUMO2/3 Recombinant antibody, PBS Only

Catalog Number: 84017-5-PBS



Basic Information

Catalog Number: 84017-5-PBS	GenBank Accession Number: BC008420	Purification Method: Protein A purification
Size: 1 mg/ml	GeneID (NCBI): 6612	CloneNo.: 241156E1
Source: Rabbit	UNIPROT ID: P55854	
Isotype: IgG	Full Name: SMT3 suppressor of mif two 3 homolog 3 (S. cerevisiae)	
Immunogen Catalog Number: AG1135	Calculated MW: 12 kDa	

Applications

Tested Applications:
IF/ICC, Indirect ELISA

Species Specificity:
human

Background Information

Ubiquitin is most famous for its function in targeting proteins for degradation by the 26S proteasome, ubiquitin needs to be attached to a substrate in chains (polyubiquitylation) before being recognized by proteasome. Similarly, SUMO (small ubiquitin-related modifier) can be linked to substrates in chains (polysumoylation), SUMO modification has been implicated in many important cellular processes including the control of genome stability, signal transduction, targeting to and formation of nuclear compartments, cell cycle and meiosis. There are 4 confirmed SUMO isoforms in human, SUMO-1, SUMO-2, SUMO-3 and SUMO-4. SUMO-2 and SUMO-3 are nearly identical but are distinct from SUMO-1. SUMO2/3 conjugation was recently widely involved in neuroprotective activities. A substitution (M55V) of SUMO4 was strongly associated with the pathogenesis of type 1 diabetes (T1D) involving NF kappa B related mechanisms.

Storage

Storage:
Store at -80°C.
The product is shipped with ice packs. Upon receipt, store it immediately at -80°C

Storage Buffer:
PBS Only

For technical support and original validation data for this product please contact:

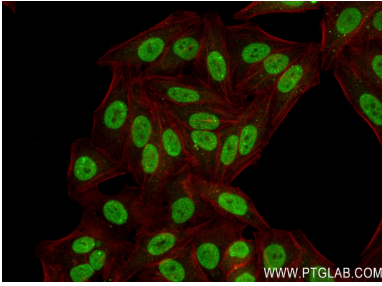
T: 4006900926

E: Proteintech-CN@ptglab.com

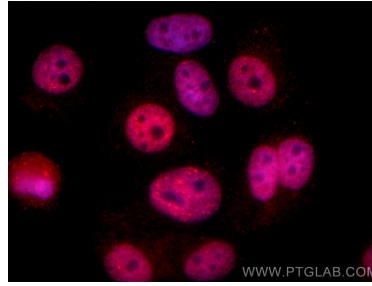
W: ptgcn.com

This product is exclusively available under Proteintech Group brand and is not available to purchase from any other manufacturer.

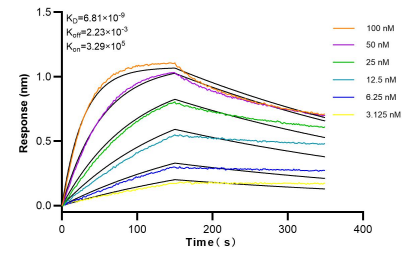
Selected Validation Data



Immunofluorescent analysis of (4% PFA) fixed HepG2 cells using SUMO3 antibody (84017-5-RR, Clone: 241156E1) at dilution of 1:250 and CoraLite®488-Conjugated Goat Anti-Rabbit IgG(H+L) (SA00013-2), CL594-Phalloidin (red). This data was developed using the same antibody clone with 84017-5-PBS in a different storage buffer formulation.



Immunofluorescent analysis of (4% PFA) fixed HepG2 cells using SUMO2/3 antibody (84017-5-RR, Clone: 241156E1) at dilution of 1:500 and CoraLite®594-Conjugated Goat Anti-Rabbit IgG(H+L) (SA00013-4). This data was developed using the same antibody clone with 84017-5-PBS in a different storage buffer formulation.



Bi-layer interferometry (BLI) kinetic assays of 84017-5-RR against Human SUMO2/3 were performed. The affinity constant is 6.81 nM.