

For Research Use Only

SLC6A6 Recombinant antibody, PBS Only (Detector)

Catalog Number: 84021-3-PBS



Basic Information

Catalog Number:

84021-3-PBS

Size:

1 mg/ml

Source:

Rabbit

Isotype:

IgG

Immunogen Catalog Number:

AG24935

GenBank Accession Number:

BC137128

GeneID (NCBI):

6533

UNIPROT ID:

P31641

Full Name:

solute carrier family 6
(neurotransmitter transporter,
taurine), member 6

Purification Method:

Protein A purification

CloneNo.:

241114D3

Applications

Tested Applications:

Sandwich ELISA, Indirect ELISA, Sample test

Species Specificity:

human

Background Information

Storage

Storage:

Store at -80°C.

The product is shipped with ice packs. Upon receipt, store it immediately at -80°C

Storage Buffer:

PBS Only

For technical support and original validation data for this product please contact:

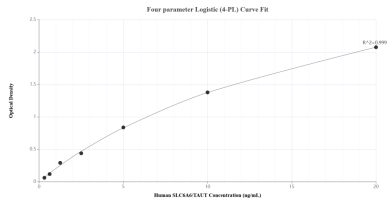
T: 4006900926

E: Proteintech-CN@ptglab.com

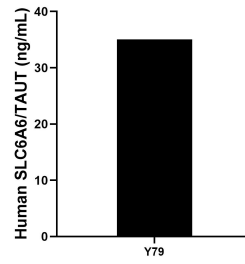
W: ptgcn.com

This product is exclusively available under Proteintech Group brand and is not available to purchase from any other manufacturer.

Selected Validation Data



Sandwich ELISA standard curve of MP00949-2, Human SLC6A6/TAUT Recombinant Matched Antibody Pair - PBS only. 84021-4-PBS was coated to a plate as the capture antibody and incubated with serial dilutions of standard Ag24935. 84021-3-PBS was HRP conjugated as the detection antibody. Range: 0.313-20 ng/mL



The mean SLC6A6/TAUT concentration was determined to be 35.03 ng/mL in Y79 cell extract based on a 2.40 mg/mL extract load.