

For Research Use Only

# CD23 Recombinant antibody, PBS Only (Capture/Detector)

Catalog Number: 84024-1-PBS



## Basic Information

<b>Catalog Number:</b> 84024-1-PBS	<b>GenBank Accession Number:</b> BC064417	<b>Purification Method:</b> Protein A purification
<b>Size:</b> 1 mg/ml	<b>GeneID (NCBI):</b> 2208	<b>CloneNo.:</b> 241269B5
<b>Source:</b> Rabbit	<b>UNIPROT ID:</b> P06734	
<b>Isotype:</b> IgG	<b>Full Name:</b> Fc fragment of IgE, low affinity II, receptor for (CD23)	
	<b>Calculated MW:</b> 321 aa, 36 kDa	

## Applications

**Tested Applications:**  
Cytometric bead array, Sandwich ELISA, Indirect ELISA,  
Sample test

**Species Specificity:**  
human

## Background Information

### Storage

**Storage:**  
Store at -80°C.  
**The product is shipped with ice packs. Upon receipt, store it immediately at -80°C**

**Storage Buffer:**  
PBS Only

For technical support and original validation data for this product please contact:

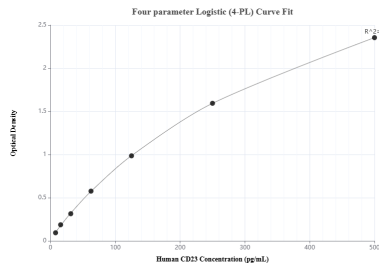
T: 4006900926

E: Proteintech-CN@ptglab.com

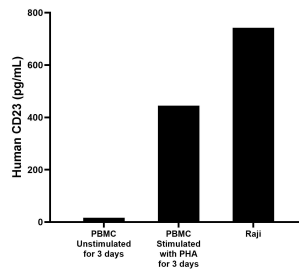
W: ptgcn.com

**This product is exclusively available under Proteintech Group brand and is not available to purchase from any other manufacturer.**

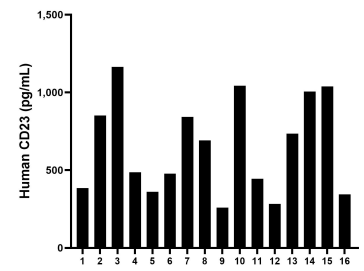
## Selected Validation Data



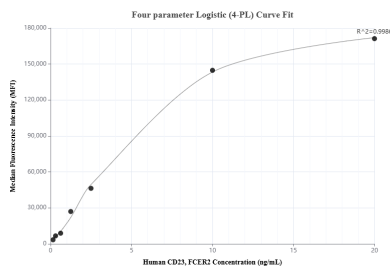
Sandwich ELISA standard curve of MP00958-3, Human CD23 Recombinant Matched Antibody Pair - PBS only. 84024-3-PBS was coated to a plate as the capture antibody and incubated with serial dilutions of standard RP02343. 84024-1-PBS was HRP conjugated as the detection antibody. Range: 7.81-500 pg/mL



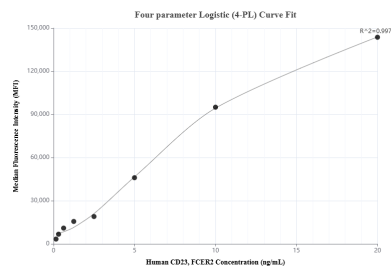
Human peripheral blood mononuclear cells (PBMC) were cultured unstimulated or stimulated with 10  $\mu$ g/mL PHA for 3 days. The mean CD23 concentration was determined to be 16.3 pg/mL in unstimulated PBMC supernatant, 444.73 pg/mL in PHA stimulated PBMC supernatant. Raji human Burkitt's lymphoma cells were cultured in RPMI supplemented with 10% fetal bovine serum, 2mM L-glutamine, 100 U/mL penicillin, and 100  $\mu$ g/mL streptomycin sulfate. The



Serum of sixteen individual healthy human donors was measured. The human CD23 concentration of detected samples was determined to be 651.0 pg/mL with a range of 259.5 - 1,165.0 pg/mL.



Cytometric bead array standard curve of MP00958-1, CD23 Recombinant Matched Antibody Pair, PBS Only. Capture antibody: 84024-1-PBS. Detection antibody: 84024-2-PBS. Standard: RP02343. Range: 0.156-20 ng/mL



Cytometric bead array standard curve of MP00958-2, CD23 Recombinant Matched Antibody Pair, PBS Only. Capture antibody: 84024-1-PBS. Detection antibody: 84024-3-PBS. Standard: RP02343. Range: 0.156-20 ng/mL